

Wild Blossoms

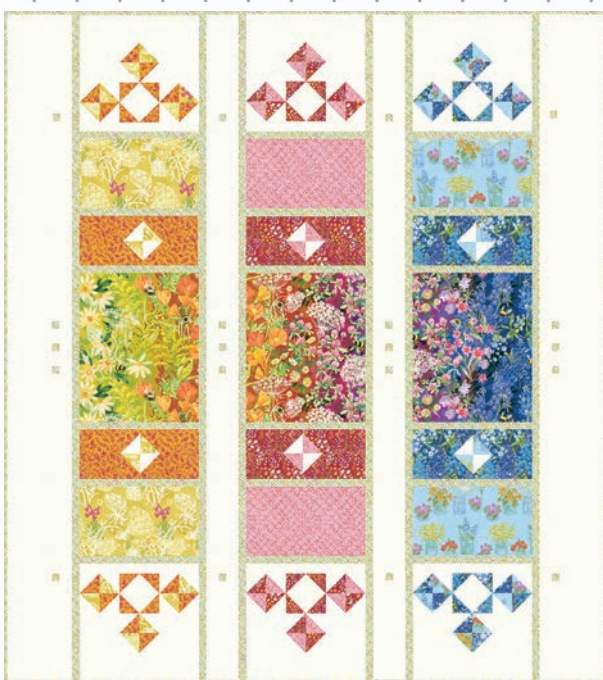
CONSIDER HOW THE WILD FLOWERS GROW -LUKE 12:27

ROBIN  PICKENS

MARCH DELIVERY

Imagine a rainbow of colors, vibrant, free, and bursting with life in Wild Blossoms. Wildflowers are these brave and bold blooms that proudly show their spirit and beauty. They are not afraid to grow in the most unexpected places.

Whether it is a field strewn with goldenrod or Queen Anne's lace adding splendor to the landscape, the range of textures and colors from these wild blossoms is a delight. Bumblebees visit the pink clover and bluebonnets stand tall with pride. Orange poppies dance with yellow daisies. With Wild Blossoms, I wanted to show the rainbow of colors in a big width-of-fabric print. This ombre panel (12" continuous repeat) blends from color to color along the rainbow, with our busy bees visiting along the way. The WOF print allows you to use it in one big stretch as the rainbow, or cut it up to have fun with all the colors and flowers as you choose. I truly thought of this as a symphony of color with wildflowers.



RPQP JT147 Joyful Trio 60" x 67"



Coordinates for this group separate out some of the flowers, so the bluebonnets can be the star on their own, or golds and oranges of daisies and poppies bring a sunshine feel. Queen Anne's lace brings softness with pretty butterflies adding a pop of accent color. The "Leafy World" print brings a mix of colors or monochromatic palette with all different types of leaves. A little flower drawing, "Little Wild Things," brings all the flowers together in a simple drawn way. What if you want to show off your wild blooms at home? The print with canning jar vases displaying these wild beauties does just that. A sketchy little diagonal line print of blotted graph paper adds a subtle texture to mix and blend.

Wild Blossoms coordinates with colors from existing Thatched basics so it is easy to blend and extend the colors even more. The colors in the line range from Thatched Cream, Early Dawn (pink), Berry, Scarlet, Apricot, Buttercup, Chartreuse, Grass, Mist (light blue) and Navy.

Get ready for colorful blooms coming your way with Wild Blossoms in March 2023.

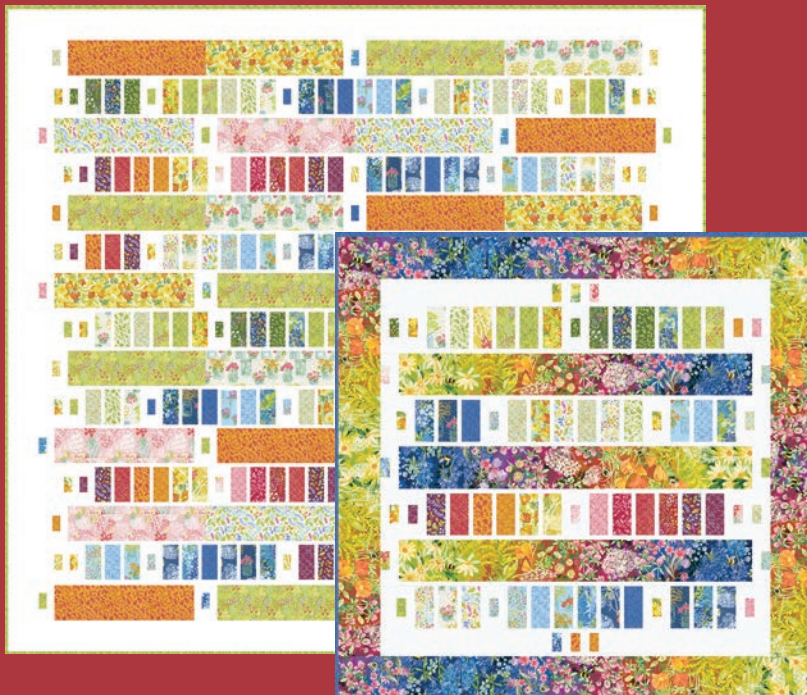
moda
FABRICS + SUPPLIES®



48730 11* 12" x 44" Repeat - 15 yd Put Up



RPQP BH145 Bar Hop Queen Version 83" x 90"
Multiple Sizes and Colorways Available - Precut Friendly



Lap Size Rainbow Version 51" x 50"



RPQP W146 Weaverly Twin 72" x 90"
LC Friendly

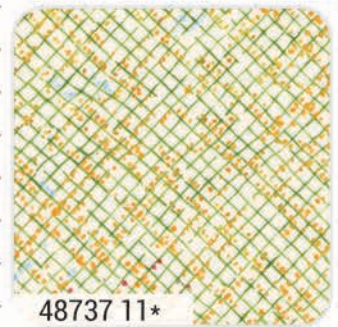
Wild Blossoms ROBIN PICKENS



48734 11*



48736 11*



48737 11*



48735 11*



48736 31*



48731 11*



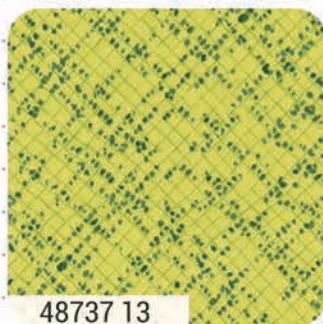
48736 16*



48735 16



48735 13*



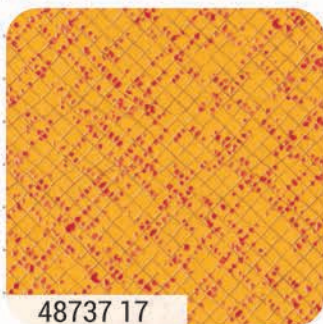
48737 13



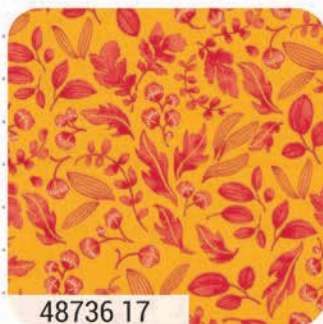
48731 13



48732 13



48737 17



48736 17



48731 17



48733 12*

Thatched Coordinates 48626

moda
FABRICS + SUPPLIES®

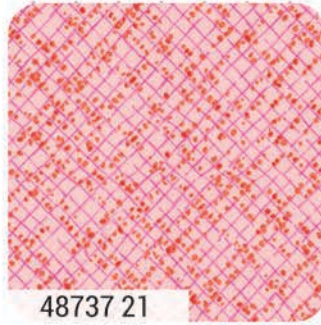
- 36
- 122
- 119
- 61
- 133
- 103
- 75
- 197
- 146
- 94

Wild Blossoms ROBIN PICKENS

MARCH DELIVERY



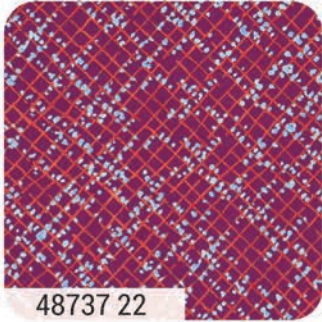
48733 21*



48737 21



48736 19*



48737 22



48736 22*



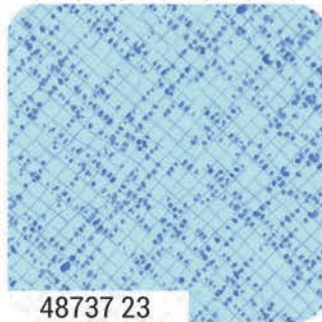
48735 19*



48737 19



48735 23



48737 23



48734 23*



48734 25*



48736 25*



48731 23



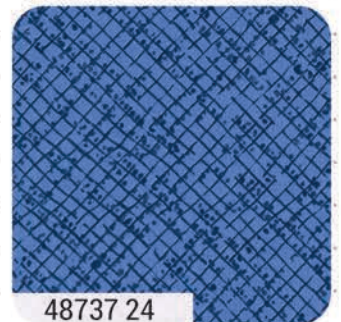
48732 23*



48732 25*



48733 25*



48737 24

48730

Asst. 15

Asst. 10

Low Cal 10

AB

JR

LC

MC

PP

MARCH DELIVERY

*34 Prints *100% Premium Cotton

Panel in AB bundle is cut 18" x 44". JRs, LCs, MCs & PPs include 34 skus plus two each of 48737-11 - 21 & 24.

Thatched Coordinates are not included in assortments or precuts.