

Honey

**ALEXIA
MARCELLE
ABEGG**

Alexia Abegg loves tchotchkes, thrift store granny square blankets, and all things 70's craft department. After a year of pandemic doldrums all she could think about was an explosion of color through the filter of nostalgia. She created a group that reminds her of slow analog afternoons rummaging through boxes of craft supplies with her grandma, who calls her and her sisters Honey. Alexia added five colors to her Add It Up basic, and also designed three canvases. See patchwork cheater prints on following spread.

ADD IT UP + +
+ + + + +
+ + + + +
ALEXIA MARCELLE ABEGG

APRIL 2022 DELIVERY

36 premium 100% Ruby Star Cotton prints
9 Cotton Linen Canvas prints (70% cotton / 30% linen)

RS4053

Asst. 15
Asst. 10

F8 FQ JR LC PP MC

Assortments and precuts include new Add It Up colors. They do not include canvas. All precuts include RS4061. FQ also includes RS4062-11.

SUGGESTED SPECKLED COORDINATES & COMPLEMENTS

RS5027 35M 92M 26M 96M 52M 104M 102

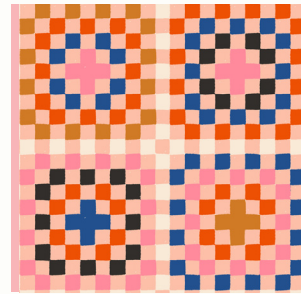
SUGGESTED ADD IT UP COORDINATES & COMPLEMENTS

RS1005 46 42 17 19 37 27 15M

SUGGESTED MODA BELLA SOLID COORDINATES & COMPLEMENTS

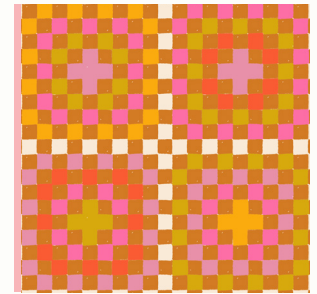
9900 231 292 89 78 291 211 64

GRANNY SQUARE | DAHLIA



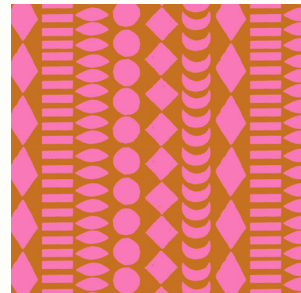
RS4053-12

GRANNY SQUARE | EARTH



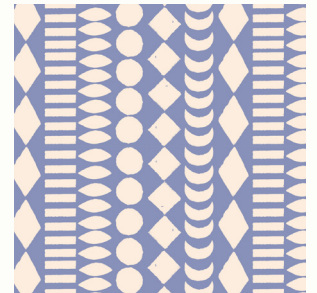
RS4053-14

BEADS | EARTH



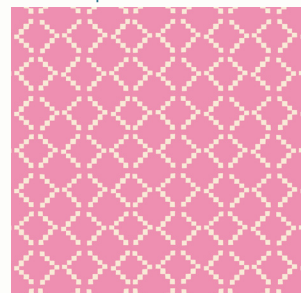
RS4055-13

BEADS | DUSK



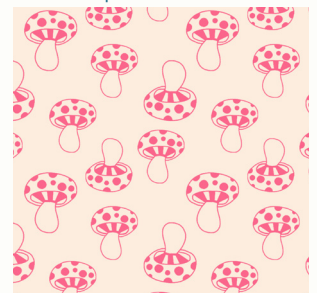
RS4055-14

TINY TILES | DAISY



RS4057-19

MUSHROOM | NEON PINK



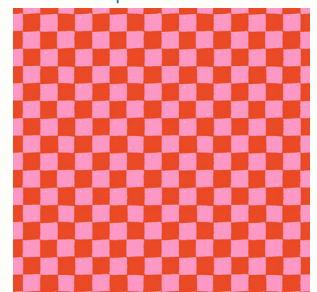
RS4058-11

DAISY | EARTH



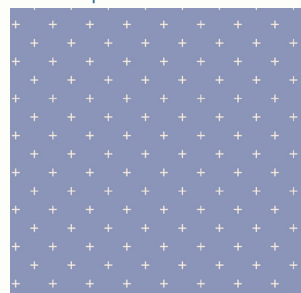
RS4059-17

BLOCK PRINT | WARM RED



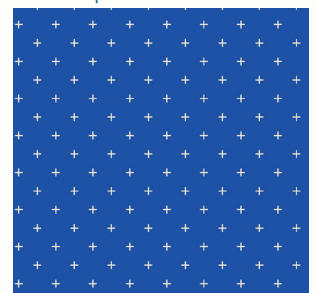
RS4060-15

ADD IT UP | DUSK

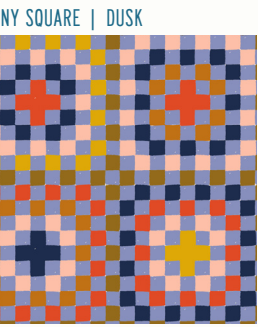


RS4005-59

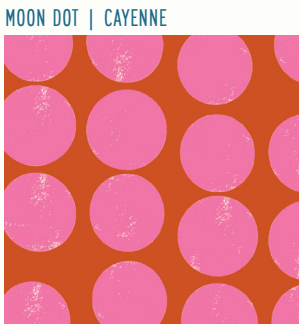
ADD IT UP | BLUE RIBBON



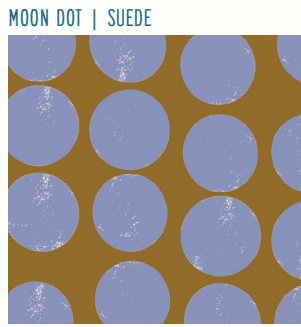
RS4005-60



GRANNY SQUARE | DUSK



MOON DOT | CAYENNE



MOON DOT | SUEDE



MOON DOT | BLUE RIBBON



BEADS | BLUE RIBBON



CHAMOMILE | DAHLIA



CHAMOMILE | MARIGOLD



CHAMOMILE | CAYENNE



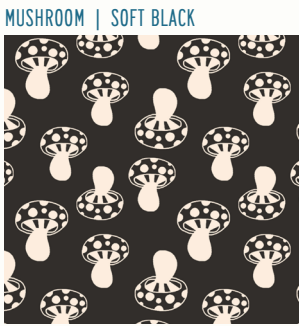
TINY TILES | NEON PINK



TINY TILES | SOFT BLACK



MUSHROOM | EARTH



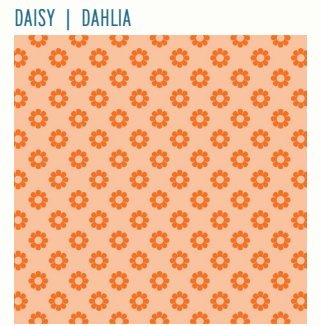
MUSHROOM | SOFT BLACK



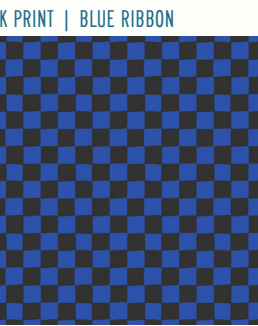
DAISY | NEON PINK



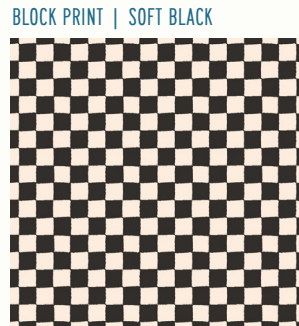
DAISY | SUNSHINE



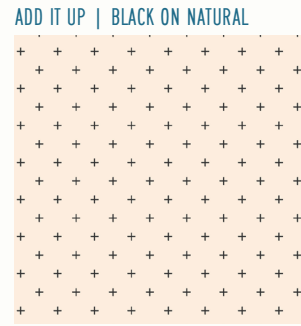
DAISY | DAHLIA



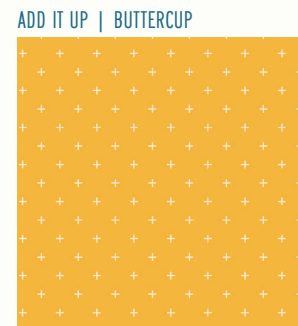
BLOCK PRINT | BLUE RIBBON



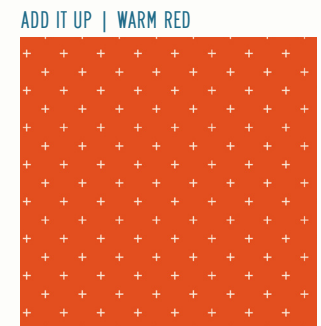
BLOCK PRINT | SOFT BLACK



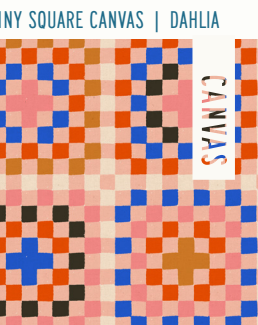
ADD IT UP | BLACK ON NATURAL



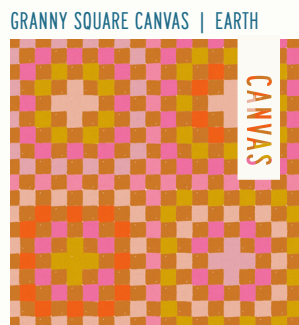
ADD IT UP | BUTTERCUP



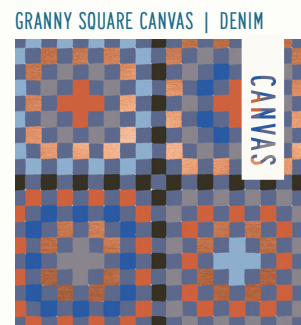
ADD IT UP | WARM RED



GRANNY SQUARE CANVAS | DAHLIA



GRANNY SQUARE CANVAS | EARTH



GRANNY SQUARE CANVAS | DENIM

See cheater prints on following spread.



**CHEATER PRINTS
APRIL 2022 DELIVERY**

Alexia’s Cheater prints are perfect for making easy on-trend patchwork garments and bags. Or, use them for striking wholecloth quilts or quilt backs. All the quilty goodness with none of the piecing. Shhh, we won’t tell! (both are printed on Ruby Star Cotton)



44"

CHEATER (RS4061)

Alexia’s hexie Cheater print delivers the cute hexie look with no piecing required! If desired, hexies can be cut apart and used with 1” hexie papers. At left, top image shows full width of colorway 11M for scale, below are all three colorway options.

Suggested 1” hex papers:
HEX100 (100 pcs)
HEX100L (600 pcs)

CHEATER | DAISY



RS4061-11M

CHEATER | DUSK



RS4061-12M

CHEATER | BLUE RIBBON



RS4061-13

**DOUBLE WEDDING RING
(RS4062)**

Alexia’s Double Wedding Ring cheater print is the ultimate shortcut! We can’t wait to see this sewn up into jackets and bags. Or, make a whole cloth quilt and practice your free motion quilting. One full circle measures 12” in pre-production art (a small amount of shrinkage usually occurs in production). At right, top image shows full width of colorway 11 for scale, below are all three colorway options.



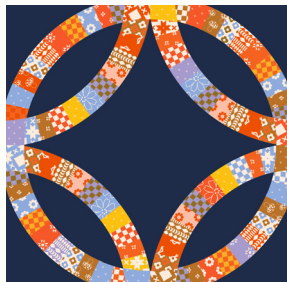
44"

DOUBLE WEDDING RING | BLUE RIBBON



RS4062-11

DOUBLE WEDDING RING | NAVY



RS4062-15

DOUBLE WEDDING RING | DAISY



RS4062-12

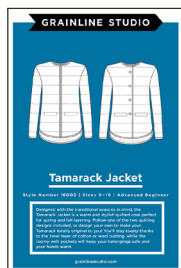
HY FRIENDLY



PP 001 Plains & Pine - Big Sky

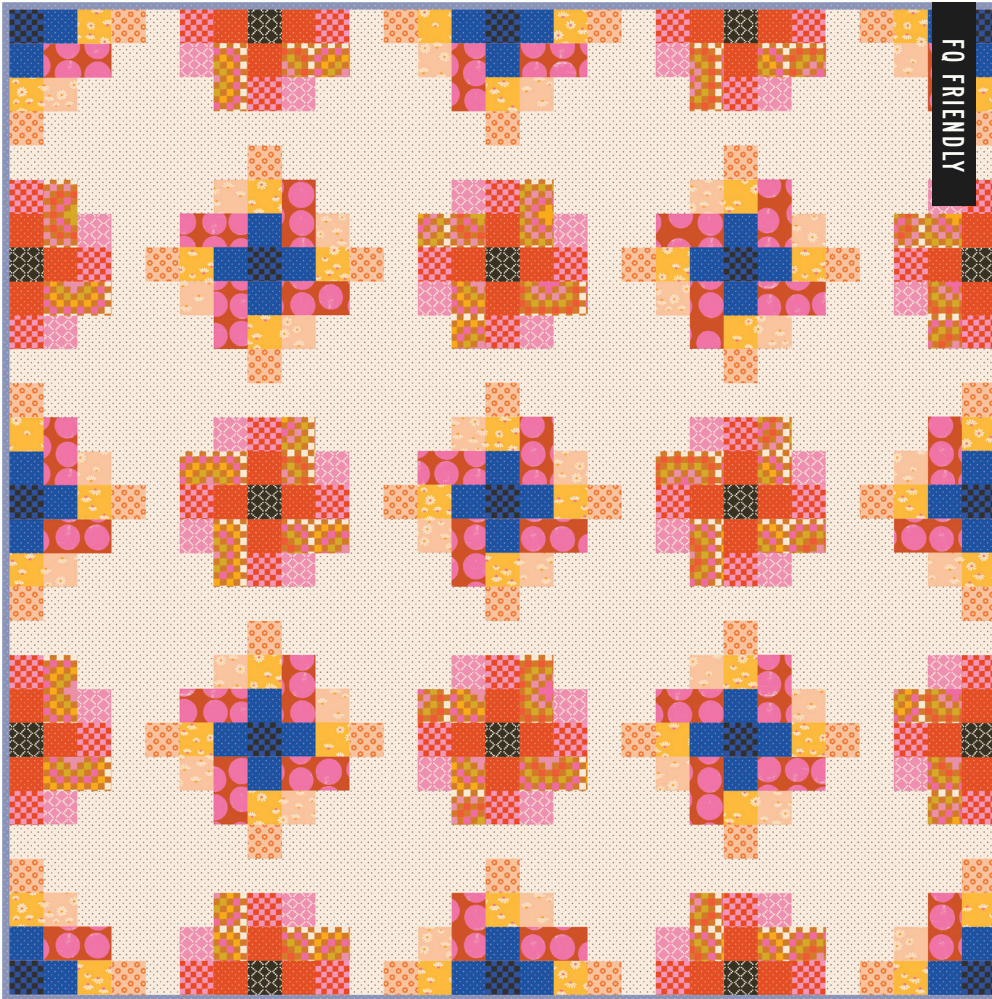
85" x 85"

cheater prints!



GS 16002
Grainline Studio
Tamarack Jacket





TCJ 119 Then Came June - Granny Cabin

58" x 58"

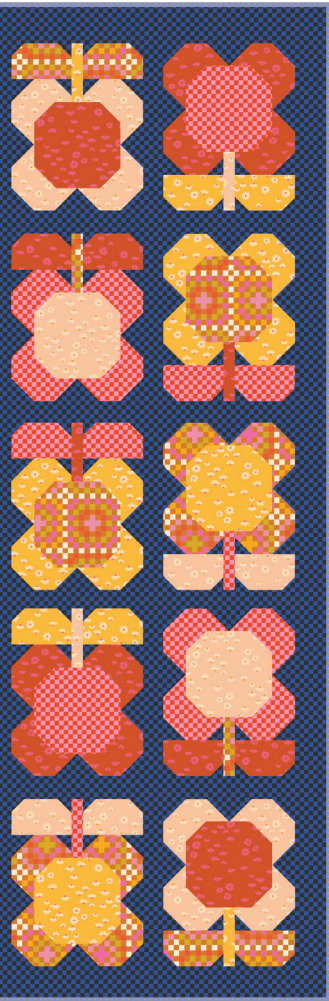


PPP 26 Pen + Paper Patterns - Folk Blooms



CC 14
Closet Core Patterns
Jenny Overalls

shown in canvas



56" x 69"



KTQ 153 Kitchen Table Quilting - Elena

56" x 70"

LST 191
Sallie Tomato
Miranda

*shown in canvas
(right) & cheater print*

