

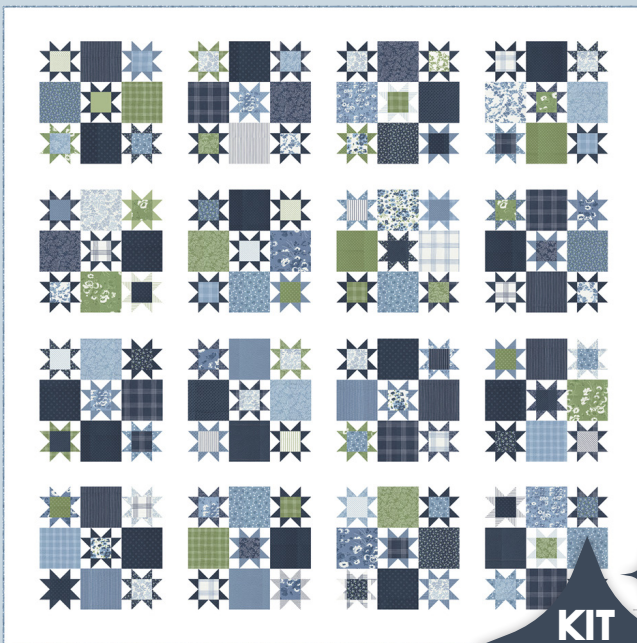


# NANTUCKET SUMMER

*by camille roskelley*

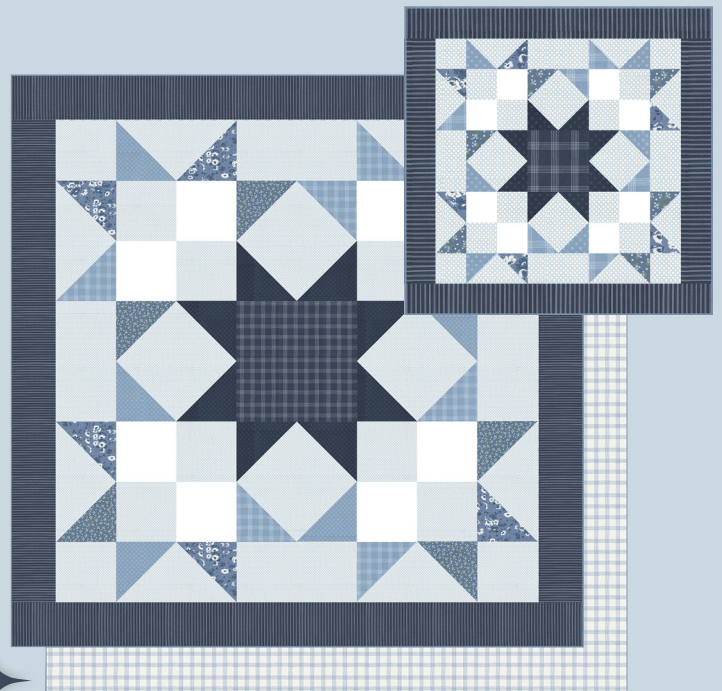
I became smitten with the color navy my first summer on Nantucket, a tiny little island off the coast of Cape Cod. I traveled across the country all by myself to this lovely place I'd only read about and spent my summer working on a sailboat and in a darling little ice cream shop. It was my first time completely on my own and I was ready for a new adventure.

From the first moment I stepped off the ferry it was love at first sight. From the cobblestone streets and salty air, to the beautiful flowers that grew everywhere I looked, Nantucket was and will always be perfection. My love of coastal design, simplicity, antique quilts and every shade of blue began that summer, and 20 years later, it's still going strong. There's just nothing quite like a Nantucket summer.



**TB 259 Hideaway** 63" x 63"  
Suggested Backing 55262 13

**KIT**  
55260

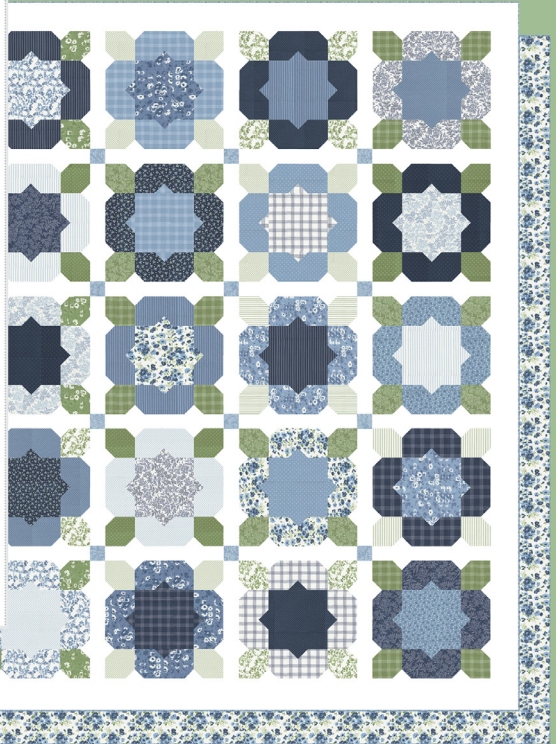


**TB 262 Seaside** 72" x 72"  
Suggested Backing 55262 24  
Seaside Mini 20" x 20"

*moda* FABRICS + SUPPLIES® **JUNE DELIVERY**



**TB 261 Lighthouse 80" x 80"**



**TB 151 Flower Girl 78" x 96"**  
Suggested Backing 55260 11



**TB 260 Sail 70" x 80"**

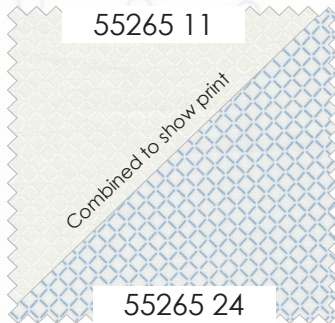


**Zipper Pulls**  
**TB110 Mul 3**

# NANTUCKET SUMMER

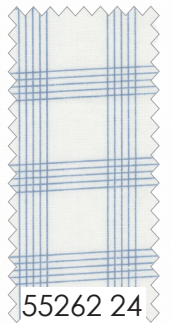
by camille roskelley

BLEACHED WHITE  
9900 98



Combined to show print

55265 24

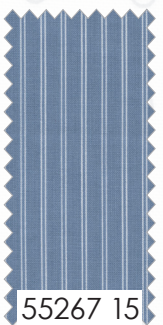
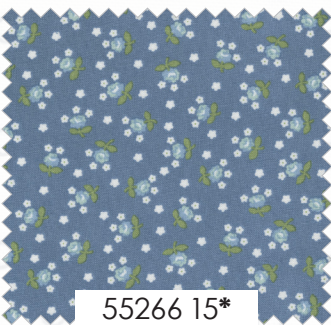
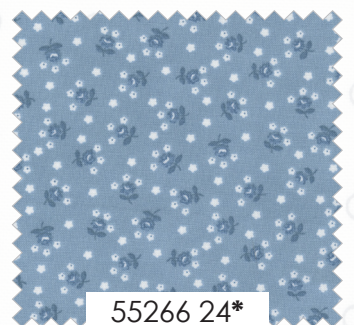


GLACIER  
9900 207



FRENCH BLUE  
9900 49

BELLA SOLID COORDINATES



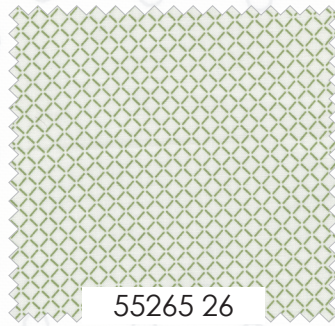
moda FABRICS + SUPPLIES® JUNE DELIVERY

# NANTUCKET SUMMER

by camille roskelley



55267 26



55265 26



55263 26\*



55262 16\*



55264 16



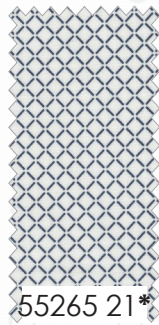
55261 26\*



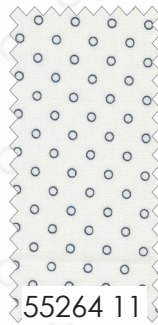
55260 26



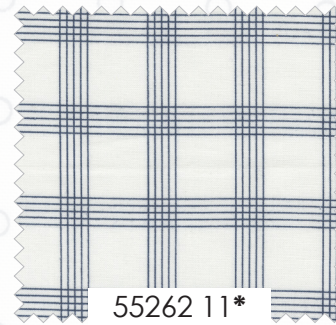
55261 21\*



55265 21\*



55264 11



55262 11\*



55267 11



55263 23



55260 21



55261 23\*



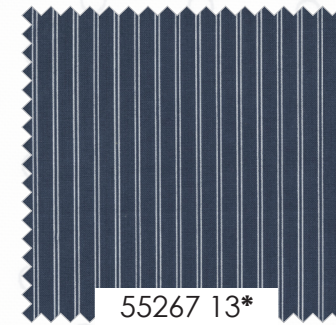
55265 12



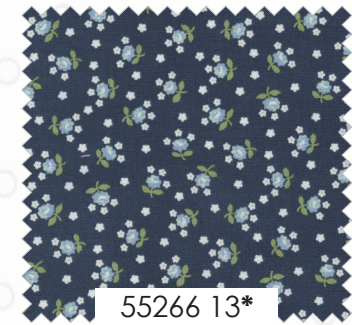
55264 12\*



55262 13\*



55267 13\*



55266 13\*

55260

Asst. 15

Asst. 10

Low Cal 10

AB

F8

HB

JR

LC

MC

PP

KIT

JUNE DELIVERY

•36 Prints •100% Premium Cotton

HBs, JRs, LCs, MCs & PPs include 36 skus plus two each of 55260 - 11, 55261 - 21, 23 & 26.