



made

Sweet **CHRISTMAS**

PS31150

@**URBAN**CHKS

Finished Size: 60"x72"

Sweet CHRISTMAS

moda

@ URBAN CHKS

Finished Size 60"x72"



Read all directions before beginning this project.

Note: The following cutting instructions are written for piecing this project without a Moda kit. If you are using Moda Kit 31150 please refer to only the directions highlighted in red. All other parts for the quilt in the kit have been precut and labeled.

Cutting

Fat Quarters – Choose 24 of the 26
From each FQ cut 2–6"x22" strips.
From each strip cut 6–3"x6" rectangles for pieced background units. Cut a total of 12 rectangles from each fat quarter.

Light Background (31156-21)
Cut 21–6"xWOF strips
From the strips cut 288–3"x6" rectangles for pieced background units.

Spacer Fabric (9900-200)
Cut 8–4½"xWOF strips
Join 2 strips end to end to make a 4½"x approx. 89" strip. Press seam open. Make a total of 4 long strips.

Cutting the Spacer Strips
To avoid confusion label strips as they are cut.

First Strip: Cut the following, (1) 4½"x16½",
(2) 4½"x18½" and (1)4½"x20½".

Second Strip: Cut one each of 4½"x24½",
4½"x26½" and (1)4½"x30½"

Third Strip: Cut one each of 4½"x10½", 4½"x28½"
and 4½"x32½"

Fourth Strip: Cut (2)4½"x38½"

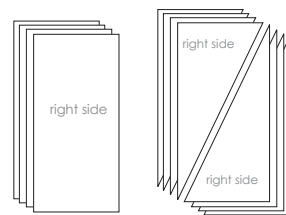
Binding
Cut 2½" wide bias (diagonal) strips to equal 284"
when joined for binding.

moda

Cutting the Rectangles

Note: Fabrics can be stacked for cutting but the fabrics must ALL be right side up. Rectangles cut in the opposite direction will not make the same unit – it will make a mirror or reversed image.

Cut each of the 3" x 6" rectangles once on the diagonal, as shown.



Stack all fabrics right sides up.

HINT:

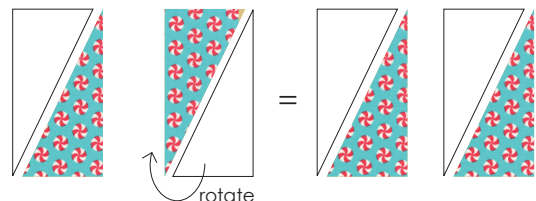
For speedier cutting, stack rectangles right sides up by color or print to cut several at once. Then pair bkgd. and prints before stitching.

Make sure every rectangle is cut in the same direction.

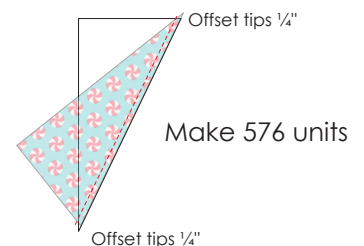
Construction

Assemble Half Rectangle Triangle (HRT) Units

Every pair of rectangles – one print & one background – will make two matching HRT units for a total of 576 units. You'll need 340 units for the quilt. Use the extras in another project, or see Bonus Projects on page 5.



1. With right sides together, offset triangle tips and stitch using a scant ¼" seam.



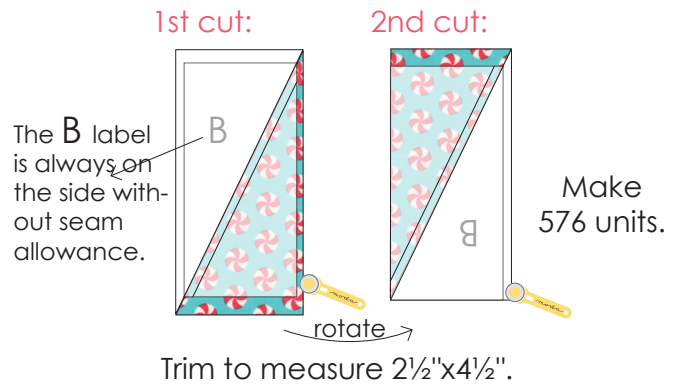
Make 576 units

Construction (cont.)

2. Always press seams toward prints.
3. Using the Bloc-Loc Half Rectangle Triangle Ruler follow the video directions (*see link below*) to trim half rectangles using only the B ruler for this quilt. Trimmed units should measure $2\frac{1}{2}'' \times 4\frac{1}{2}''$ with seams.

The link for the Half Rectangle Triangle video:


<http://blocloc.com/video-tutorials-new>



Preparing the Snowman Panel

Note: The following directions are for fusing and machine appliqué. Be sure to follow the manufacturer's directions for the fusible web product you are using. If you prefer hand appliqué, make the adjustments needed for your chosen method.

Step 1:

 For best results, spray panel with sizing or spray starch until soaked. Allow piece to dry and then press. This will make placement, fusing and machine appliqué much easier.

Step 2:

Rough cut the large Snowman leaving a generous ($\frac{1}{2}'' - \frac{3}{4}''$) cream "seam allowance" around the entire figure.

Step 3:

Cut fusible web into small strips (approx. $2'' \times 4''$) to position around the edge of the prepared Snowman.

On the wrong side of the Snowman begin at the starting point on the bottom left side (as shown) and work your way around the edge of the figure stopping at the bottom edge. Cut and fit the strips as needed to go around curves. Make sure that the outside edge of each fusible strip extends into the cream "seam allowance" – shown in red on the diagram. This is to ensure that the cut edge of the Snowman will be securely bonded to background fabrics before machine appliquéing.

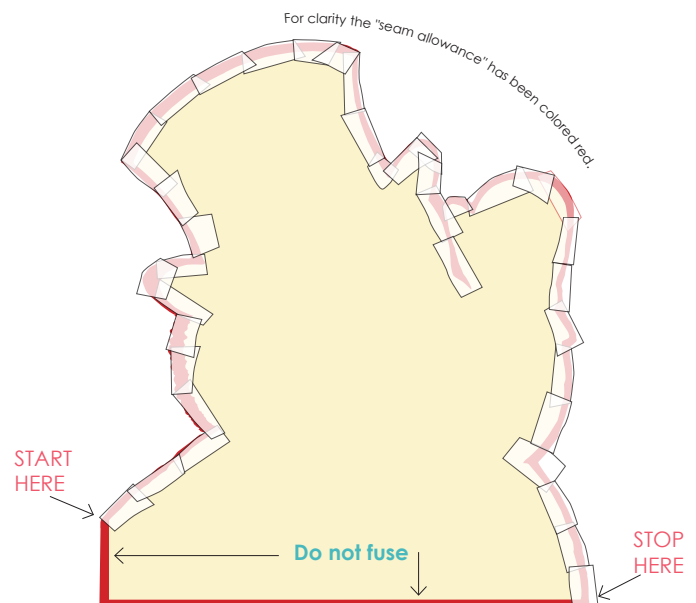
Following manufacturer's directions, fuse the strips to the wrong side of the Snowman.

Step 4:

Remove the paper backing from the fused strips. With sharp scissors, trim Snowman along the printed edge to remove the cream "seam allowance". Set prepared Snowman aside while you piece the background.



Rough cut the large Snowman leaving a generous ($\frac{1}{2}'' - \frac{3}{4}''$) cream "seam allowance" around the entire figure.



Make sure that the outside edge of each fusible piece extends into the "seam allowance."
Do not fuse the bottom edge of Snowman.

Construction (cont.)

Piecing the Quilt

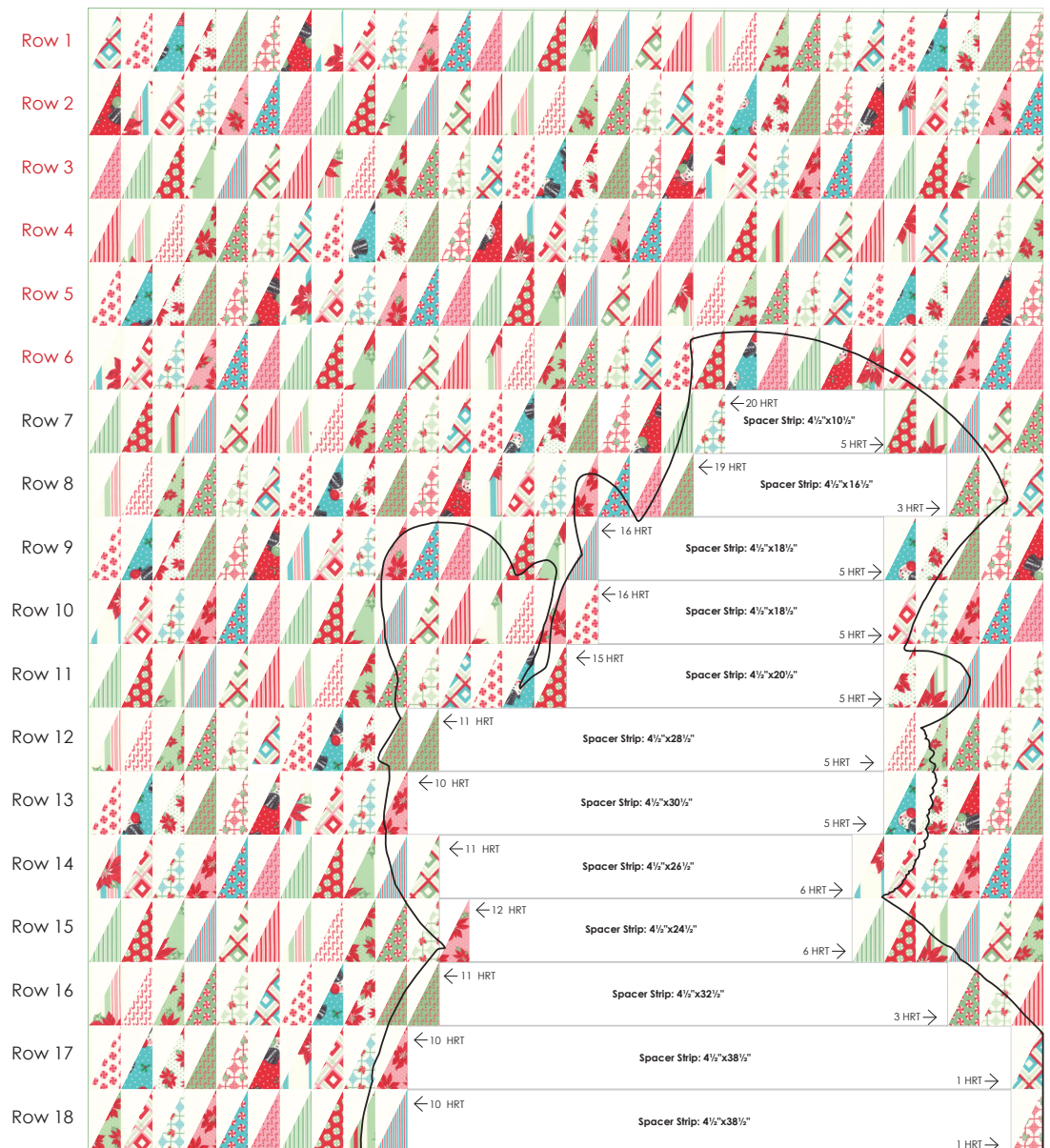
The quilt is made up of 18 rows using various quantities of HRTs. Refer to the chart on the right to determine the number of HRTs and spacers required for each row.

Press odd rows to the left and even rows to the right as rows are assembled. Join assembled rows. Press.

Note: To prevent shadowing, the white spacer fabric and hidden HRTs will be cut away after the Snowman is stitched down and before quilting.

Row	#HRT Units	Spacer	#HRT Units
1	30 HRT	Rows 1-6 30 HRT Units with No Spacers	
2	30 HRT		
3	30 HRT		
4	30 HRT		
5	30 HRT		
6	30 HRT		
7	20 HRT	10½"	5 HRT
8	19 HRT	16½"	3 HRT
9	16 HRT	18½"	5 HRT

Row	#HRT Units	Spacer	#HRT Units
10	16 HRT	18½"	5 HRT
11	15 HRT	20½"	5 HRT
12	11 HRT	28½"	5 HRT
13	10 HRT	30½"	5 HRT
14	11 HRT	26½"	6 HRT
15	12 HRT	24½"	6 HRT
16	11 HRT	32½"	3 HRT
17	10 HRT	38½"	1 HRT
18	10 HRT	38½"	1 HRT

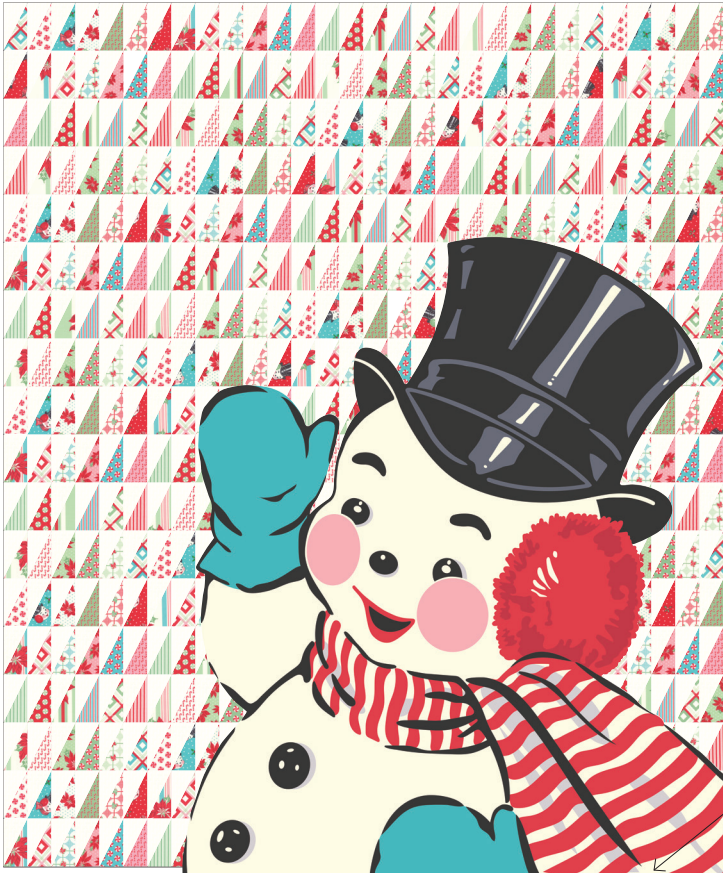


Quilt top should measure 60½"x72½" with seams.

moda

Adding the Snowman

1. Position prepared Snowman in the lower right corner of the pieced background. Make sure the bottom edge and the lower right corner of the Snowman extend slightly beyond the side and bottom edges of the pieced background. The edges will be trimmed and squared up after quilting.
2. Carefully fuse the Snowman in place, using an appliqué pressing sheet or freezer paper to protect your ironing surface from any excess fusible web.
3. Machine appliqué the Snowman to the background.



Note: To reduce bulk and prevent shadowing, trim away some of the hidden background blocks and spacer strips behind the Snowman when appliqué is completed.

moda

Make sure the bottom edge and the lower right corner of the Snowman extends slightly beyond the edges of the pieced background.



Finishing

1. Layer with batting and backing. Quilt as desired.
2. Trim and square up quilt before binding.
3. Using a diagonal seam, join bias strips end to end. Press seams open. Fold prepared strip in half wrong sides together and press to make the binding. Stitch binding to quilt.
4. Cut out and add the Snowman quilt label from the panel to complete your quilt.

Sweet *moda* CHRISTMAS @ URBAN CHKS

Finished Size 60"x72"



Yardage Requirements for non kit users:

- 1 Fat Quarter Bundle (31150AB)
- 1 Snowman Panel (31150-P)
- 3¾ yds. (31156-21) Light Background Print
- 1¼ yds. (9900-200) Spacer Fabric (Bella Solid)
- ⅝ yd. (31155-11) Binding
- 4 yds. Backing – pieced across

Also needed:

- Bloc-Loc – Half Rectangle Triangle Mini Ruler Set
Stock# HRT 2-1 MN
- 2 yds. 20"-22" fusible web
- Appliqué pressing sheet or freezer paper to protect ironing surface

Bonus Projects

1. If made completely of HRT units, the background for the large quilt would consist of 18 rows of 30 HRT units, or a total of 540 units. Since the background behind the snowman will be cut away before quilting to prevent shadowing, the instructions are written to use spacer strips to replace 140 HRTs, that would be cut away.

We suggest that you make a small pillow and/or a table runner with some of the extra HRTs. Add the small snowman from the panel as a finishing touch for one of these bonus projects.



- A 17"x53" table runner requires 104 HRTs and ¾ yard of the red stripe (31155-11) for sashing and binding. The sashing is cut 1½" wide to finish at 1".

- A 12"x22" pillow requires 33 HRTs.



MODAFABRICS.COM
PS31150 — SUGGESTED RETAIL \$10.00