

# Family Tree

## Deb Strain

*Our family tree is growing! As with many others, our family is our world and I wanted to create a fabric line to reflect that. The panel provides a blank family tree to fill with birds you may personalize with names of those you love. What better way to create a family heirloom than creating a quilt, wall-hanging, or table-runner about your own family? **After all, families truly are forever!***

No 19642 11\* Cream

family is my world Families Grow  
I LOVE FAMILIES ARE FOREVER



family is my world  
FAMILY TREE IS FILLED  
Together  
FAMILIES ARE  
es Grow Toget  
LOVE FAMILI  
rt and end  
OUR FAMILY  
amily We  
FOREVER ROOTS  
th family  
erish Family OUR  
and end with  
ROOTS MATTER Cherish F  
family is my world Families Grow  
FAMILIES ARE FOREVER

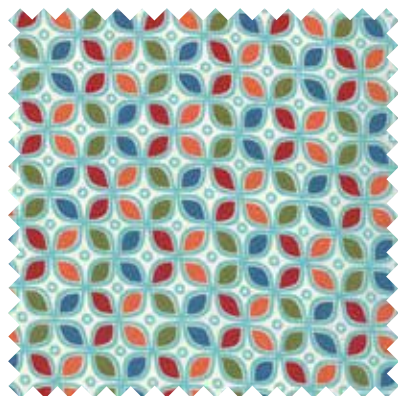




No 19649 11  
Cream



No 19644 11\*  
Cream



No 19647 11\*  
Cream



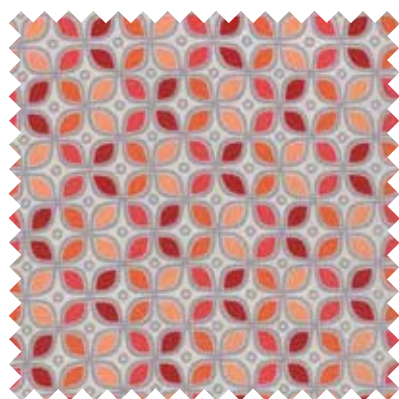
No 19646 11  
Cream



No 19648 11  
Cream Blue



No 19648 12  
Cream Orange



No 19647 15\*  
Grey Beaks



No 19645 15\*  
Grey Beaks



No 19649 12  
Pale Blue



No 19649 17\*  
Grey Beaks



No 19645 12  
Robins Egg Blue



No 19649 13\*  
Robins Egg Blue



*Moda's future!*



Birds approx. 3"x2"

Tree Panel approx. 27"x24"



**№ 19640 11\***  
**Cream**



**№ 19640 12**  
**Grey Beaks**



**№ 19640 13**  
**Robins Egg Blue**



*"I start with sketches of how I envision the main coordinates of the group."*

*see the creek from the doors and occasionally a deer will walk right up to the patio! One of the walls is covered entirely by corkboard, so that I can pin my inspirations up when working on a project and another wall is floor to ceiling shelving for all of my references and projects. I love my studio and spend a lot of time there! When our family visits, they just come straight to the studio, because that is where I am usually found.*

**1. How did you and Moda get hooked up? and how long have you been designing fabric?**

*Way back in 1995, I did my first Quilt Market ever, previewing greeting cards with a "quilter's feel." I also advertised in a trade journal with the card line. A couple of weeks later, the phone rang and it was Moda, asking if I wanted to submit designs for a fabric line to them. I responded... Yes! I'm honored to have designed for Moda ever since!*

**2. Do you work out of your home or do you have a separate design studio? Does your home office make you happy and do you spend a lot of time in "your" room?**

*My studio has always been in our home, although it has been in several places...the room above the garage (or "tower" as I lovingly referred to it), the office and now the basement (or "dungeon" as it is sometimes lovingly called.) It doesn't feel like a basement though. There is a fireplace and walkout French doors to a brick patio. I can*

**3. What keeps you current with trends in color, design and projects?**

*I am always watching trends... colors, themes and design. My magazine subscription list is huge and I attend several trade shows a year, just to absorb the latest trends. Blog hopping is my late night "guilty pleasure." If I am ever "stuck" as to color or theme inspiration, I go window shopping at young womens' clothing stores where the latest trends are sure to be presented.*

**4. Where did you find inspiration for this line? How long ago did you design this group? Was it hard to keep it a secret?**

*The inspiration for "Family Tree" came from my family, of course! We are very close (as many families are!) and they are the most cherished part of my life. I have wanted to create a family tree project for a long time that could be personalized for my own family and passed down for generations. As our family grows, appliques can be added to the tree. I hope that our great grandchildren will one day add their own names to the branches!*

**5. How do you translate an idea into a fabric line? What steps do you take?**

*For me, there are many steps to creating a fabric line. I start with sketches of how I envision the main coordinates of the group. After sharing my sketches with Moda, I usually (but not always) do a pen and ink drawing of the pattern or icon. The fun really begins when I am able to start painting different colorways and see how the same pattern changes as the colors change. It is often hard to stop trying different combinations! I always think that I have to see the pattern with every color combination possible before making a decision as to which ones to send. Sometimes I send them all and let Moda choose!*

**6. Deadlines – do you fear them or do they motivate you to create?**

*Deadlines are a necessary evil in our line of work. If they didn't exist, I would never finish anything! They are definitely motivating and I am most happy when my calendar is filled with deadlines, because I know that I will be creating a lot of art in that time.*

**7. How would you describe yourself in one sentence? So many ideas...so little time!**

**8. What is your favorite music – movie – TV show – food? movie....**

*My favorite **movie** is probably "To Kill A Mockingbird" although I LOVE to watch most movies except horror movies.  
**TV show**...I'm a Downton Abbey fan but have recently been watching Mad Men. We are definitely "binge" watchers and love to watch a whole season over a weekend. Favorite weekly show is Modern Family!  
**Food**...sushi. I love it and don't get it much in rural Ohio!*

**9. My Idea of a great vacation trip is....**

*Traveling overseas with my husband or spending a week with all of the kids and grandkids somewhere. We try to take a week every year and go somewhere together as a family. It is a wonderful time to relax, reconnect and remember how much we love each other!*



**No 19646 16  
Brown Blue**



**No 19646 17\*  
Brown Red**

*double borders*



**No 19641 11\*  
Cream**



**No 19641 12  
Grey Beaks**



**No 19641 13  
Robins Egg Blue**

Various size labels – approx. 1"x3 or 1"x4"

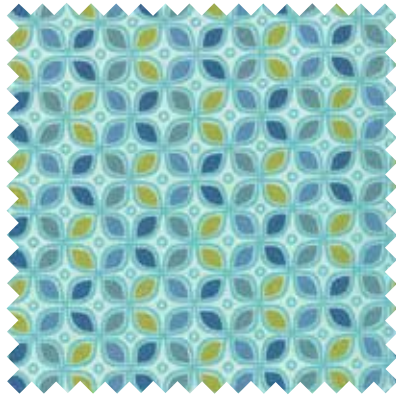


# Family Tree Deb Strain

1



No 19644 12\*  
Robins Egg Blue



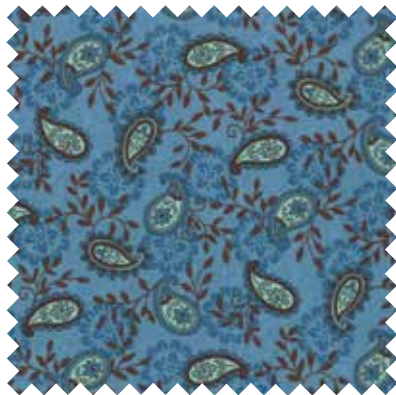
No 19647 12  
Robins Egg Blue



*Making Memories – add your family name then sign and embroider names on background after each reunion*



No 19642 12\*  
Robins Egg Blue



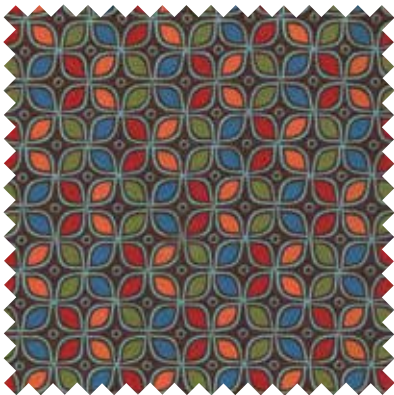
No 19645 13\*  
Sky Blue



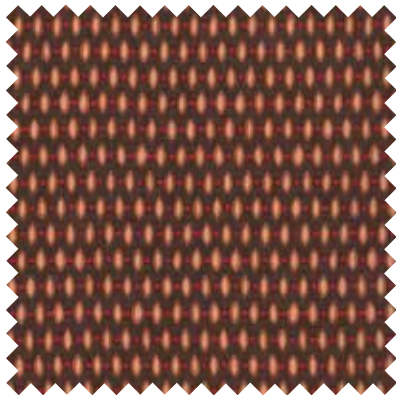
No 19646 13\*  
Sky Blue



No 19649 14\*  
Sky Blue



No 19647 16\*  
Bark Brown



No 19648 17  
Bark Brown



No 19642 16  
Bark Brown



No 19648 15\*  
Blossom Orange



No 19644 15\*  
Blossom Orange



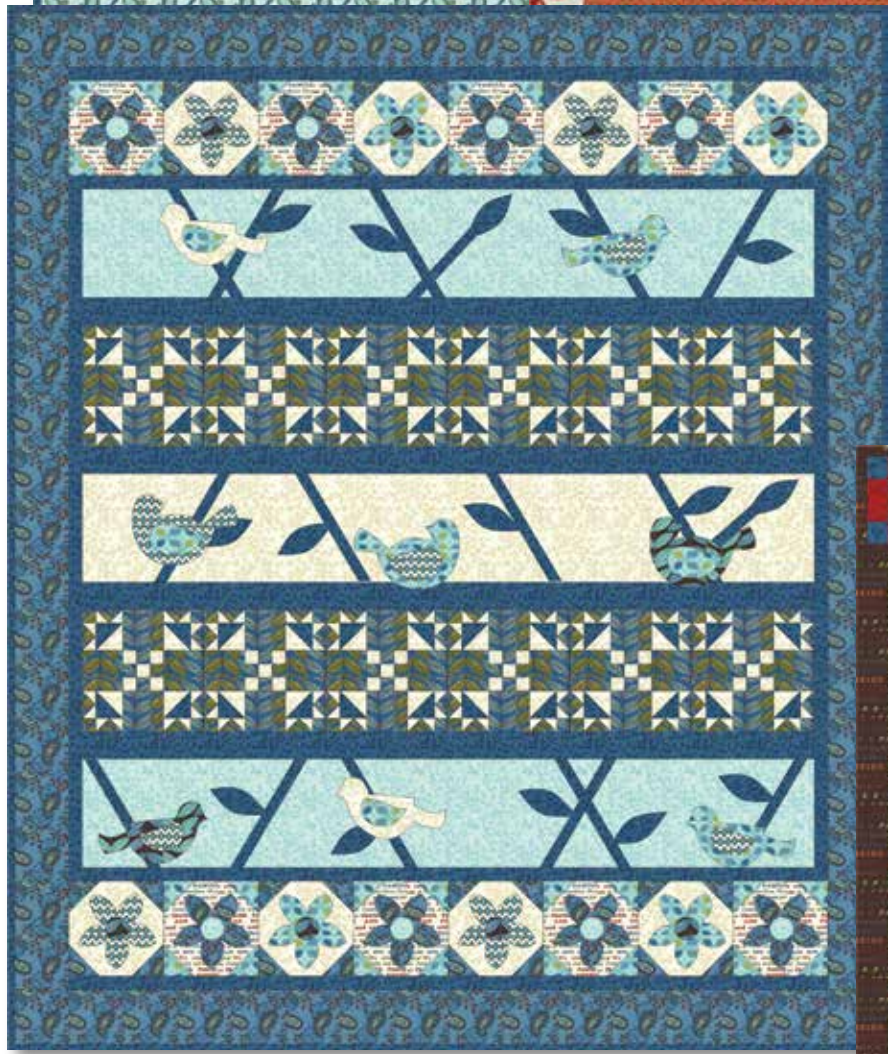
No 19649 16\*  
Blossom Orange



No 19645 14\*  
Red Bird Red



No 19649 15  
Red Bird Red



- 1 CHD 1304  
CHD 1304G  
*Reunion Runner*  
Size: 63"x30"
- 2 CHD 1305  
CHD 1305G  
*Teddy Bear Picnic-Girl*  
*Teddy Bear Picnic-Boy*  
Size: 45"x45"
- 3 CHD 1303  
CHD 1303G  
*In the Treetops*  
Size: 64"x76"
- 4 CHD P005  
CHD P005G  
*My Family Tree*  
Size: 30"x40"



19640

Asst. 15

Asst. 10

Low Cal 20

AB

JR

LC

PP

• 100% Premium Cotton • 35 Prints

Delivery: October, 2013

AB Bundle includes Panels - 19640 & 19641-11 JR's, LC's & PP's do not include panels. JR's, LC's & PP's include 2 each of 19647 & 19649.