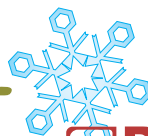


# Aspen Frost



**BASICGREY**

In neutral birch, iced cranberry, red hot cinnamon, dazzling white, glacier blue and green apple, *Aspen Frost* is the comfort and blessing of yummy pies, sparkling drinks and a warm flame burning in the hearth.

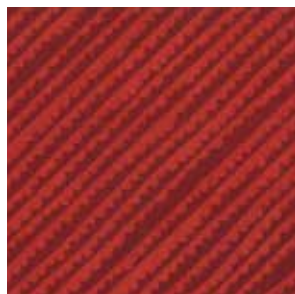
Charming and familiar, wild and sweet, a juxtaposition of Christmas past and present, *Aspen Frost* by BasicGrey holds all the joy and tradition of a homespun holiday!



30332 14 Cinnamon



\*30150 186  
Cranberry Sauce



30337 20  
Cranberry Sauce



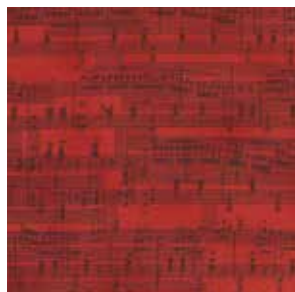
30334 16  
Cranberry Sauce



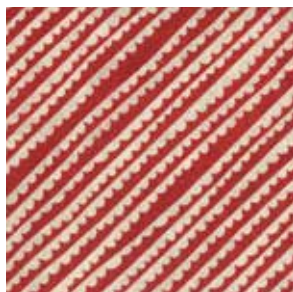
\*30333 16  
Cranberry Sauce



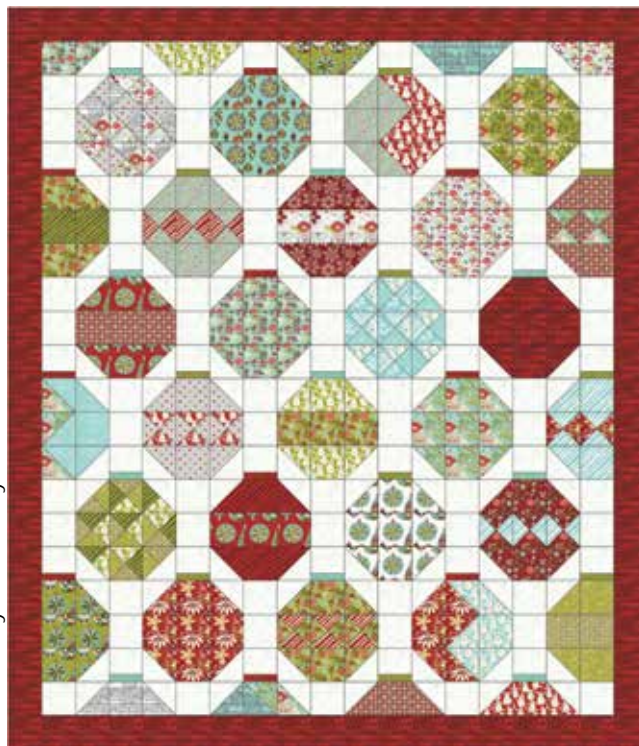
30335 14 Cinnamon



30336 16  
Cranberry Sauce



\*30337 15  
Cranberry Sauce



Pattern by Basic Grey - BG

**BG PAT8111 OR BG PAT8111G** — Oh What Fun 57"X 66"

"G" Patterns ship with Group  
Fabrics with \* included in low cal assortment



\*30331 16  
Cranberry Sauce



\*30330 16  
Cranberry Sauce





\*30330 15 Evergreen



30333 15 Evergreen



\*30334 15 Evergreen

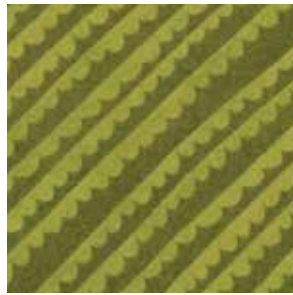


\*30332 15 Evergreen

*moda*



30338 15 Evergreen



\*30337 19 Evergreen



30150 184 Evergreen



30331 15 Evergreen



30332 11 Ice Queen



\*30335 11 Ice Queen



30150 180 Ice Queen



30338 11 Ice Queen

**FYI:** [basicgrey.com](http://basicgrey.com)



\*30330 11 Ice Queen



\*30336 11 Ice Queen



30331 11 Ice Queen



\*30334 11 Ice Queen

Pattern by This and That Pattern Co. - TT



TT BK242 or TT BK242G— Holly Jolly 63"X 80"



Pattern by Coach House Designs - CHD



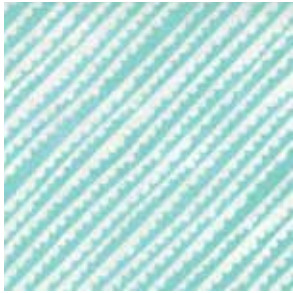
CHD 1227 or CHD 1227G  
By the Fireplace 61"X 67"



30336 12 Iced Aqua



\*30335 12 Iced Aqua



30337 11 Iced Aqua



\*30333 12 Iced Aqua



30150 181 Iced Aqua



\*30338 12 Iced Aqua

Pattern by Coach House Designs - CHD



CHD 1226 or CHD 1226G- Candy Stripes 79"X 87"



30330 12 Iced Aqua



\*30331 12 Iced Aqua



30334 12 Iced Aqua



\*30332 12 Iced Aqua

30330

Asst. 15

Asst. 10

Low Cal 18

AB

F8

JR

LC

MC

PP

•36 Prints

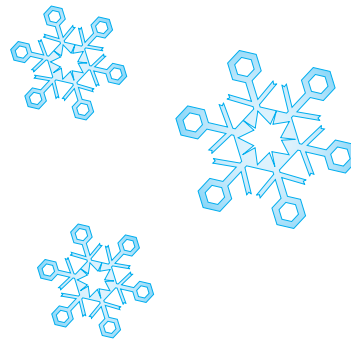
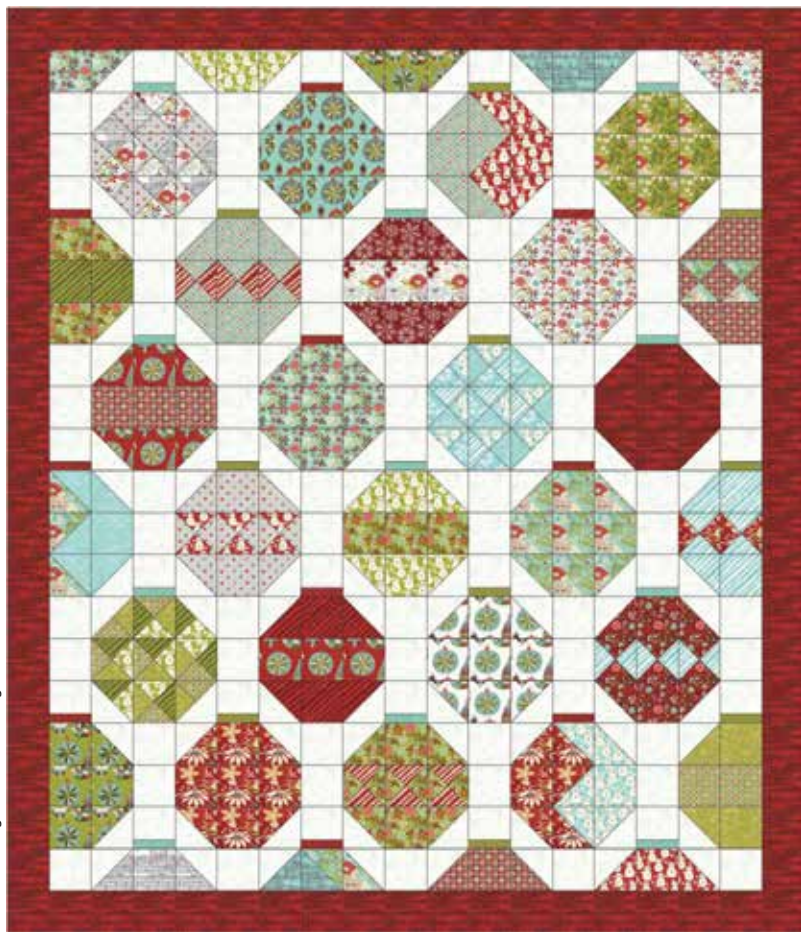
•100% Premium Cotton

JR's, LC's, MC's & PP's include two each of 30150.

*Delivery: May, 2013*



Pattern by Basic Grey - BG



Basic Grey Patterns –BG  
**Oh What Fun!** 57"x66"  
 BG PAT8111 OR BG PAT8111G

Yardages provided at the time of this printing may change. Please consult the printed pattern before cutting kits.

Yardage	1Q	10 Qs
<b>Eighth Yards (26)</b>	$\frac{1}{8}$	$1\frac{1}{4}$
30150-181 30331-16 30334-12 30337-11		
30150-184 30332-12 30334-15 30337-15		
30150-186 30332-14 30334-16 30337-19		
30330-11 30333-12 30335-14 30337-20		
30330-15 30333-15 30336-11 30338-12		
30331-12 30333-16 30336-12 30338-15		
30331-15 30334-11		

Yardage	1Q	10 Qs
<b>Fourth Yards (4)</b>	$\frac{1}{4}$	$2\frac{1}{2}$
30330-12 30330-16 30332-11 30332-15		
<b>Assorted Yardage</b>	<b>1Q</b>	<b>10Qs</b>
30335-11 bkgd.	$1\frac{1}{2}$	15
30335-12 piecing/binding	1	10
30336-16 piecing/border	1	10
30331-11 piecing/backing	$4\frac{1}{8}$	$41\frac{1}{4}$

Stay Connected!    

MODA WINTER 2013 FABRIC COLLECTIONS

Pattern by Coach House Designs - CHD



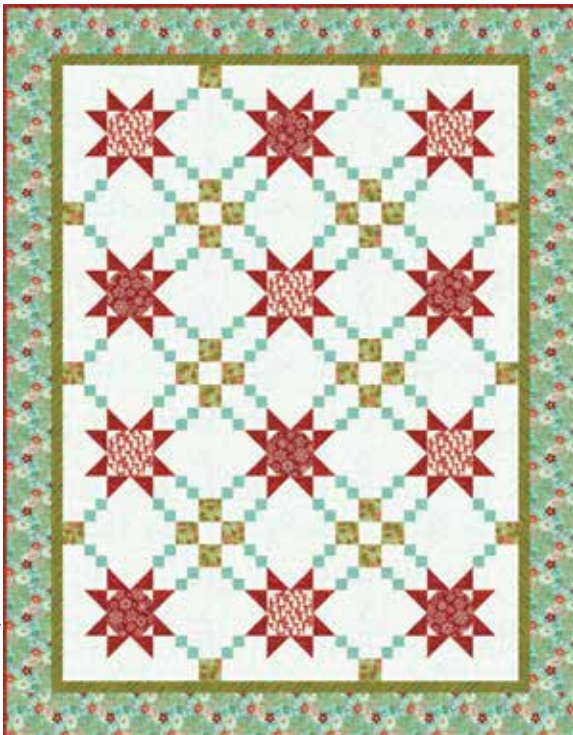
Coach House Designs —CHD  
**By the Fireplace** 61"x67"  
 CHD 1227 or CHD 1227G

Yardage		1Q	10 Qs
<b>Eighth Yards (3)</b>		1/8	1 1/4
30335-11	30337-11	30337-15	_____
<b>Fourth Yards (6)</b>		1/4	2 1/2
30150-181	30330-16	30333-16	30334-15
30330-12	30331-15	_____	_____
<b>Half Yards (7)</b>		1/2	5
30150-99	30334-11	30335-12	30337-20
30333-15	30334-12	30335-14	_____
<b>Assorted Yardage</b>		<b>1Q</b>	<b>10Qs</b>
30337-19	applique	5/8	6 1/4
30338-15	blks/border	5/8	6 1/4
30150-184	blks/app.	5/8	6 1/4
30150-186	blks/bkgd/binding 2		20



This and That Pattern Co. — TT  
**Holly Jolly** 63"x80"  
 TT BK242 or TT BK242G

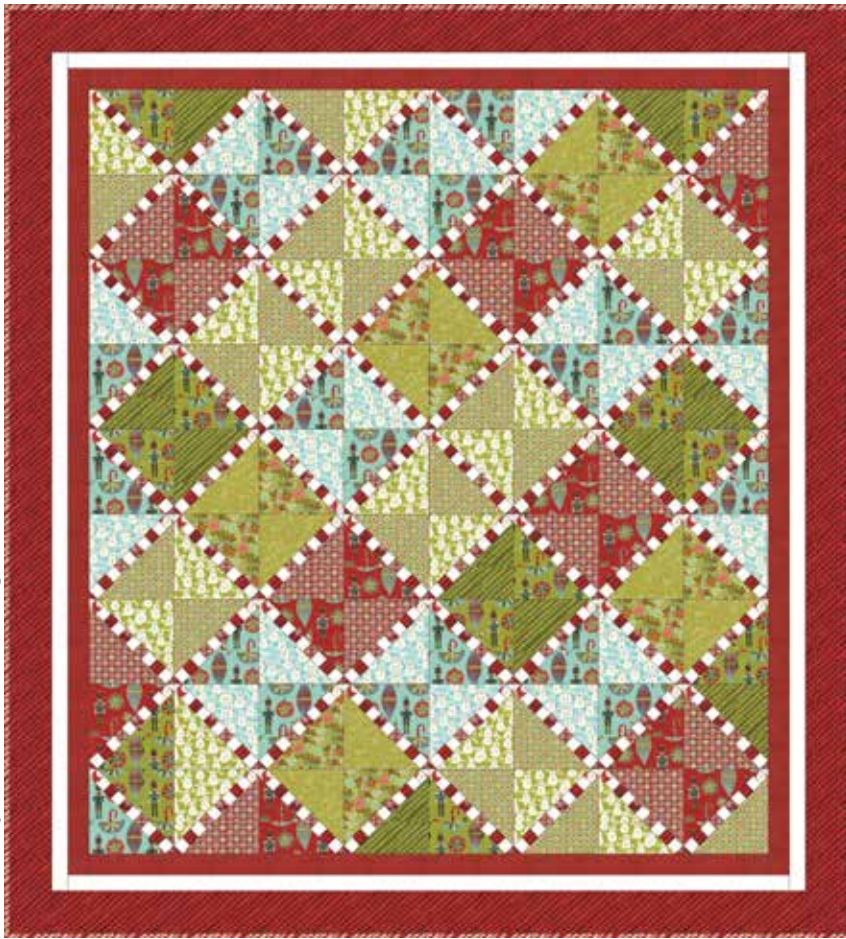
Pattern by This and That Pattern Co. - TT



Yardage		1Q	10 Qs
30150 181	alt.block/sm sq	1/2	5
30330 12	outer border	1 1/4	12 1/2
30332 15	alt.block/lg sq	3/8	3 3/4
30333 16	star centers	1/4	2 1/2
30335 11	background	3 1/4	32 1/2
30335 14	star centers	1/4	2 1/2
30336 16	star points	3/4	7 1/2
30337 19	inner border	1/2	5
30337 20	binding	2/3	6 2/3



Pattern by Coach House Designs - CHD



Coach House Designs –CHD  
**Candy Stripes** 79"x87"  
 CHD 1226 or CHD 1226G

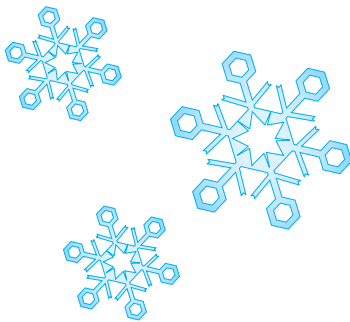


Yardage	1Q	10 Qs
---------	----	-------

Five Eighth Yards (8)	5/8	6 1/4
30150-186 30331-15 30333-12 30334-15		
30331-12 30331-16 30333-15 30337-19		

Yardage	1Q	10 Qs
---------	----	-------

Assorted Yardage	1Q	10Qs
30333-16 blocks	1/4	2 1/2
30336-16 blocks	1/4	2 1/2
30332-15 blocks	3/8	3 3/4
30335-14 blocks	3/8	3 3/4
30338-15 blocks	3/8	3 3/4
30334-16 blocks	3/8	6 3/8
30337-15 binding	3/4	7 1/2
30337-20 blks/border	1 3/8	13 3/4
30338-11 blks/border	1 3/8	13 3/4



Yardages provided at the time of this printing may change. Please consult the printed pattern before cutting kits.

Stay Connected!    

MODA WINTER 2013 FABRIC COLLECTIONS