

Spring Fever!

moda

ME AND MY SISTER DESIGNS



Easy Pattern #2



SPRING FEVER QUILT KIT
KIT21120 COST: \$20
QUILT MEASURES 40" x 54.5"
Delivery: January, 2010

MMS 9097

Spring Fever!



Swatches

Note: *Easy as 123* pattern has directions for 3 easy beginner friendly quilts. Kit includes fabrics for Pattern #2 only.

The Spring Fever Kit includes 3½" x WOF strips of the following:



22120-11



22120-12



22120-14



22120-17



22121-13



22121-15



22122-12



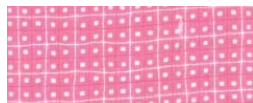
22122-15



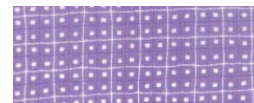
22122-17



22123-11



22124-11



22124-12



22124-15



22125-13



22125-14



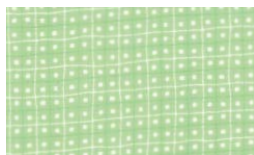
22125-17



22126-13



22126-14



22124-15 Binding ½ yd.

Asst. KIT21120 will make 24 kits.

moda

KIT21120



7 52106 79584 6

MMS 9097G



7 52106 79160 2

Asst KIT21120



7 52106 79585 3

MMS 9097



8 96057 00977 2

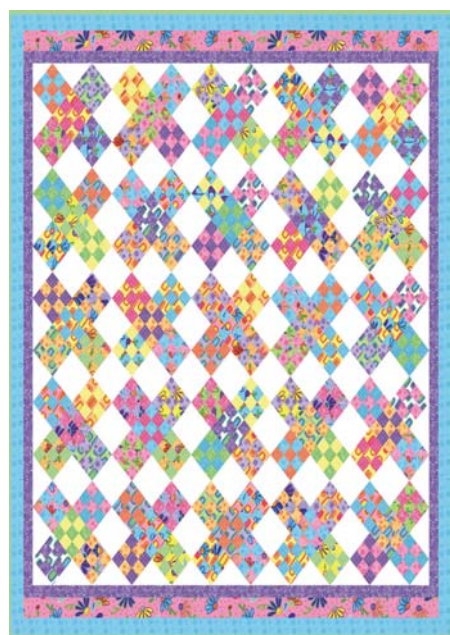


Hip to Be Square * 55 x 69 * Retail: \$9.00

FABRIC REQUIREMENTS

40, 1½ x 40 - inch strips* or 20, ⅓ yards for blocks MMS 9014
 2 yards white print for blocks and setting and
 corner triangles)JGAFH|00014U
 ¾ yard print for block centers and first border
 1 yard print for second border MMS 9014G
 ⅝ yard print for binding (FCBAG|79333Q)
 4½ yards of fabric for backing

* 40, 1½ x 40 - inch strips are also known
 as a Moda Honey Bun™



Kiss Me Kate * 71 x 76 * Retail: \$9.00

FABRIC REQUIREMENTS

32 fat quarters* for blocks
 2 ¼ yards light print for un-pieced blocks
 and setting and corner triangles
 ⅝ yard print for first border
 ½ yard print for second border
 ⅝ yard print for third border
 ⅝ yard print for binding
 5 yards of fabric for backing

MMS 9097
)JGAFH|00977S

MMS 9097G
 (FCBAG|79160S



Pinafore Bag * 25 inches tall * Retail: \$9.00

FABRIC REQUIREMENTS

1 yard fabric for the exterior bag and inside
 pocket MMS 9099
)JGAFH|00099R
 1¼ yards coordinating fabric for the handles
 1 yard coordinating fabric for the bag lining
 and handle tie MMS 9099G
 (FCBAG|79339S)
 1¼ yards fusible interfacing...Pellon 978F
 Coordinating thread
 Marking Pencil

Me and My Sister Designs
presents
Greta
36 x 36 inches

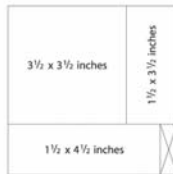
Fabric Requirements

- 36, 5 x 5 - inch charm squares
- 1/3 yard white for sashing
- 1/3 yard white for first border
- 1/2 yard print for second border
- 1/3 yard print for binding
- 1 1/4 yards for backing
- *Yardage is based on 40 - inch wide fabric.*

Cutting Instructions

Blocks

- From each 5 x 5 - inch charm square:
Cut 1, 3 1/2 x 3 1/2 - inch square
- Cut 1, 1 1/2 x 3 1/2 - inch rectangle
- Cut 1, 1 1/2 x 4 1/2 - inch rectangle



Sashing

- From white for sashing:
• Cut 4, 2 x 40 - inch strips
From 2 of these strips cut
6, 2 x 8 1/2 - inch rectangles
From the remaining strips cut
2, 2 x 27 1/2 - inch strips

Borders

- From white for first border:
• Cut 4, 2 x 40 - inch strips
From these strips cut
2, 2 x 27 1/2 - inch strips
2, 2 x 30 1/2 - inch strips

From print for second border:

- Cut 4, 3 1/4 x 40 - inch strips
From these strips cut
2, 3 1/4 x 30 1/2 - inch strips
2, 3 1/4 x 36 - inch strips

Binding

From print for binding:

- Cut 4, 2 1/4 x 40 - inch strips

Piecing

Use 1/4 - inch seam allowance throughout.

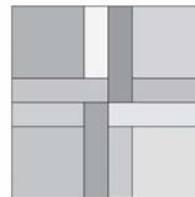
Blocks

- Arrange and sew:
1, 3 1/2 x 3 1/2 - inch square,
1, 1 1/2 x 3 1/2 - inch rectangle and
1, 1 1/2 x 4 1/2 - inch rectangle into a
block as shown. Block should measure
4 1/2 x 4 1/2 - inches.



Make 36

- Arrange and sew 4 of these blocks into
a larger block as shown. Block should
measure 8 1/2 x 8 1/2 - inches.



Greta Charm Tablet * 50 sheets per tablet * Retail: \$70.00

Page 1 of 8
Petal Pink



22120-11



22126-11



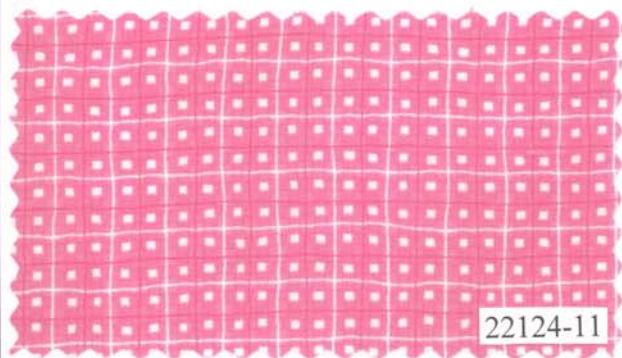
22122-11



22121-18



22126-18



22124-11



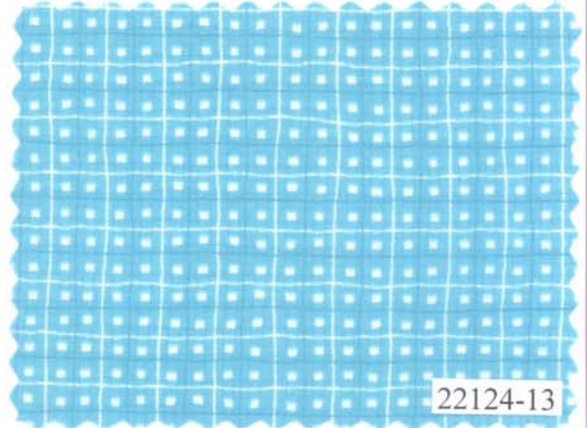
22123-11



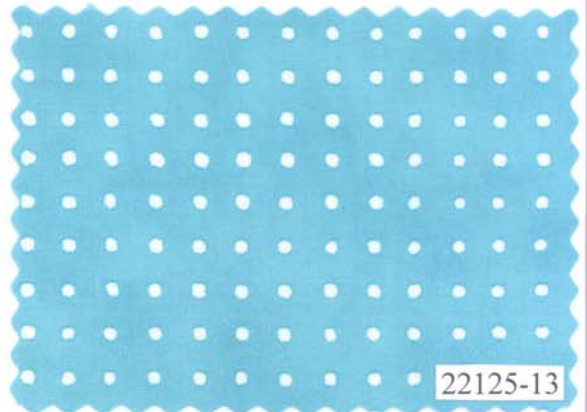
22120-13



22121-13



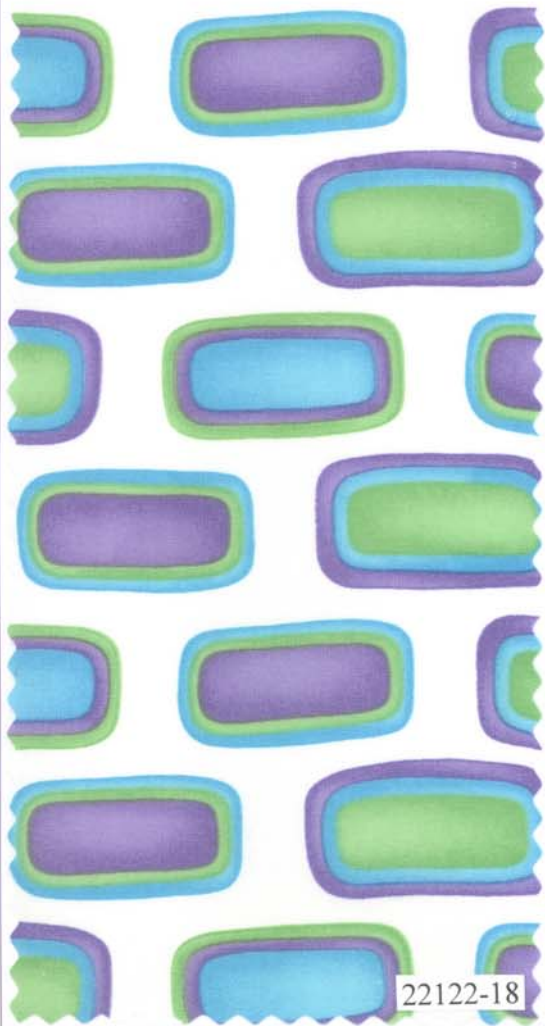
22124-13



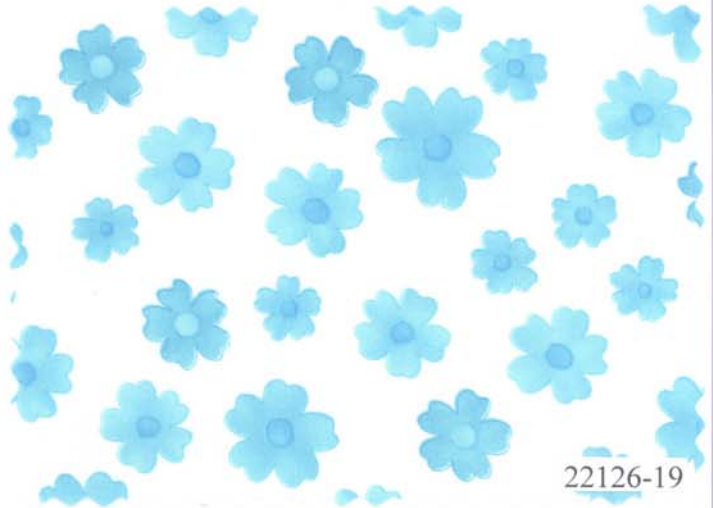
22125-13



22120-18



22122-18



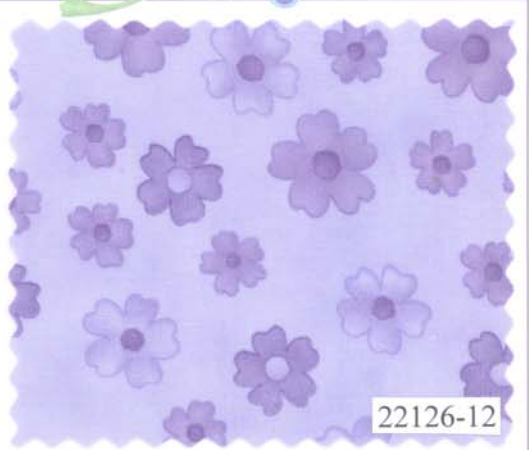
22126-19



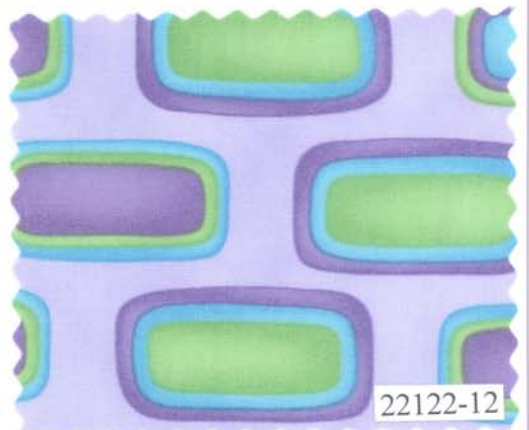
22126-13



22121-12



22126-12



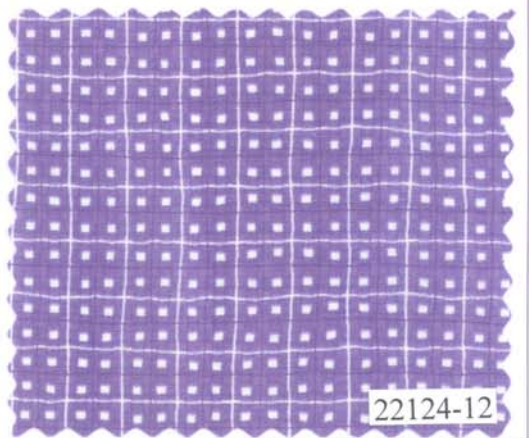
22122-12



22120-12



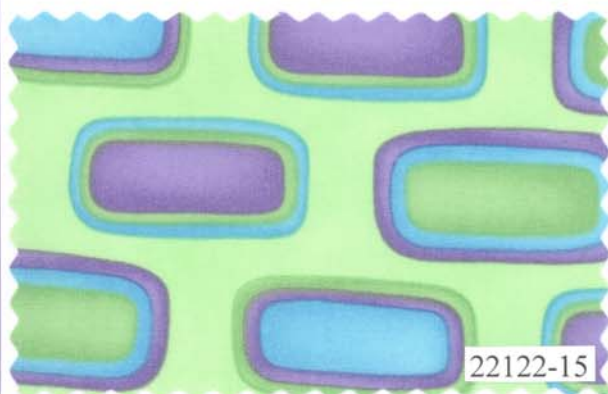
22123-12



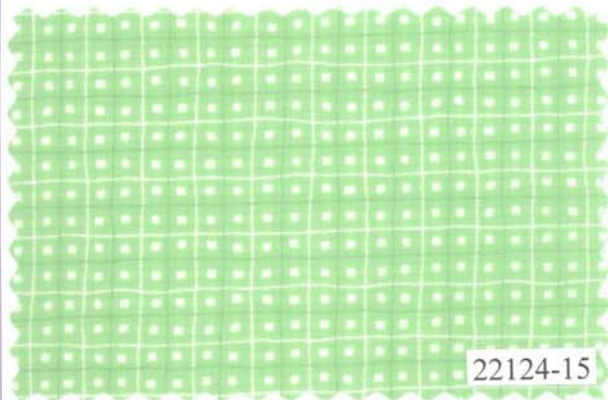
22124-12



22121-15



22122-15



22124-15

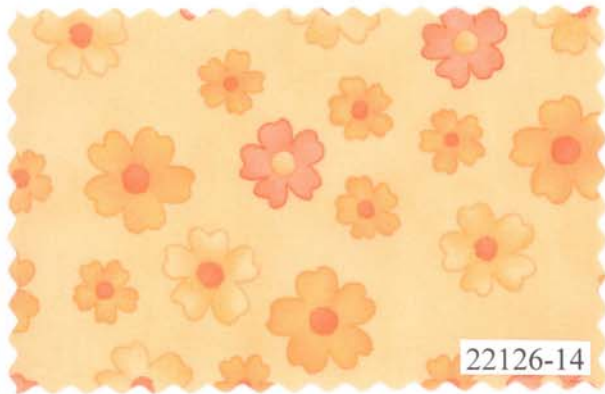


22123-15

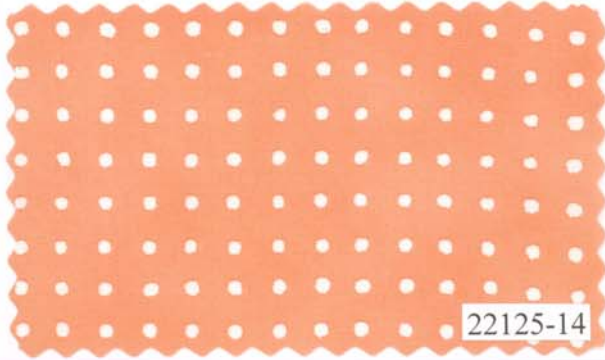
Page 7 of 8
Overly Orange



22120-14



22126-14



22125-14



22122-14

