



Clermont Farm

by Minick & Simpson



*14680 12



*14683 11



14685 22



*14688 12



14689 12



14686 12



*14681 12



14681 14



*14687 14



*14682 14



14660 24



*14660 22



*14685 12



14689 14



Alma's Quilt — #MS1005/MS1005G Finished Quilt Measures 64" x 90"

The little girl ventured to the large red barn. Behind the creaking gate was her pet pig, curled in a tiny pink ball watching a spider. She looked up and saw the spider intently weaving a new message for the week. This one would say, “All-American.”



14686 11



*14685 11



*14681 11



*14680 11



14684 11



14682 11



*14688 11



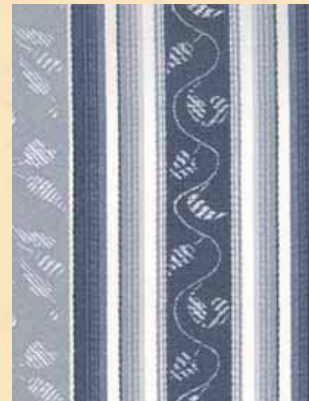
*14660 21



14682 21



14689 11



14683 13



*14684 15



*14686 13



14681 13



14680 13



14683 14

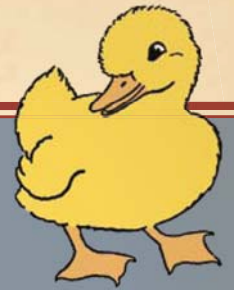
Clermont Farm

by Minick & Simpson

SEPTEMBER DELIVERY

SKUS: 40 PRINTS
CONTENT: 100% COTTON

- ASST. 14680-15 15 YARDS OF EACH
- ASST. 14680-10 10 YARDS OF EACH
- ASST. 14680-10H 10 YARDS OF 20 SKUS*
- 14680AB BUNDLE: 40 SKUS
- 14680F8 BUNDLE: 40 SKUS
- 14680JR JELLYROLL - (40) 2½"X45" STRIPS - PK 4
- 14680LC LAYER CAKE - (42) 10"X10" SQUARES - PK 4
- 14680PP (42) 5"X5" SQUARES - PK 12



14687 13



14688 13



*14680 15



*14689 15



14684 13



14687 15



*14685 13



*14660 25



*14686 15



MS1004/MS1004G
Patrick's Patchwork 71" x 87"