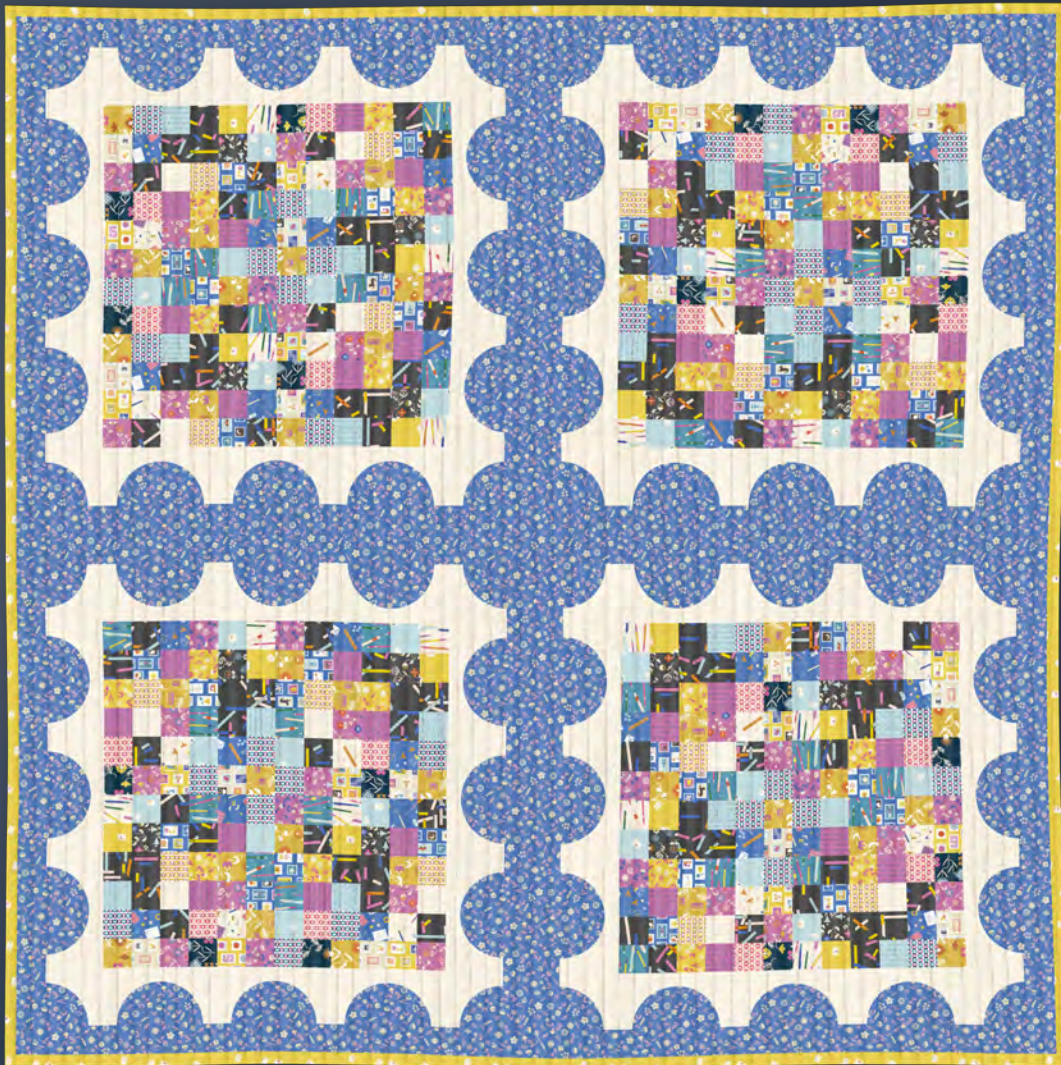


★ OFFICIAL ★
RUBY STAR
SOCIETY
PATTERN CO.

POSTAGE PATCHWORK

project sheet



FABRIC BY RASHIDA COLEMAN-HALE

SUPPLIES NEEDED

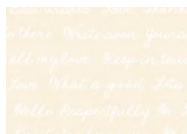
- 1 Salutations Jelly Roll
- Fabrics below for curved blocks + background + sashing



RS1095 15

2½ YDS

sashing, curved blocks,
and background






RS1096 11

2¼ YDS

curved blocks

- Binding - ½ yds of fabric
- Backing - 5 yds of 44" fabric
- Batting - at least 90" x 90"
- Thread for piecing and quilting

CUTTING INSTRUCTIONS

FABRIC	FIRST CUT	SECOND CUT
	Cut (15) 5" x WOF strips	Using Template B, sub cut each strip into 8 Template B shapes for a total of 112 pieces
	Cut (12) 4" x WOF strips	Using Template A, sub cut each strip into 10 Template A shapes for a total of 112 pieces
	Cut (8) 2½" x WOF strips (for background borders)	
	Cut (4) 4½" x WOF strips (for middle block sashing)	
	Cut all jelly roll strips in half for extra variety in fabric placement	

NOTES ON THE PATTERN

This fabric and quilt were designed as part of the release of Salutations, a fabric line by Rashida Colman-Hale for Ruby Star Society.

Fabrics used in our quilt:
Salutations By Rashida Coleman-Hale

PIECING INSTRUCTIONS

TIPS FOR TEMPLATE PREPARATION:

Print the template pages on cardstock, or trace them onto template plastic. If you cut into your template, take the time to make a new one. Future you will thank you when it comes time to piece your quilt!

When cutting curved pieces, try using a smaller rotary cutter, such as a 28mm, and make several small cuts instead of one large sweeping cut. This will make your cuts more precise and will minimize stretching your fabric.

Consider using silicone non slip grips on the backs of your templates, and you may want to starch your fabric before cutting.

center postage stamp blocks

1. Take your jelly roll strips you've cut in half and sew them together into strip sets of 6. Make sure to mix up the fabrics to get variety!

2. For each strip set, iron seams in one direction. Sub cut strip sets in (8) 2½" sections.

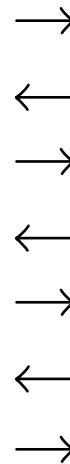
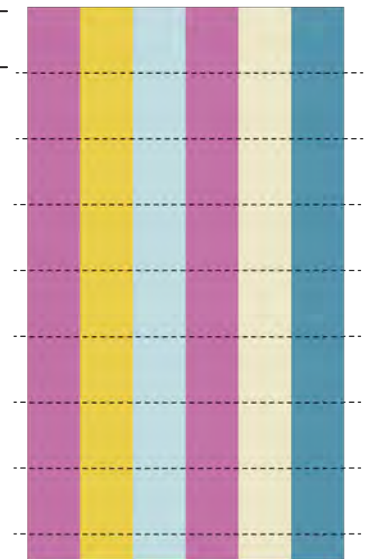
3. Assemble blocks using (24) 2½" sections as shown below. Ensure you have a good variety of print placement by laying out your blocks first, and make sure your seams for each row alternate directions. The alternating seams will allow you to nest your seams for increased accuracy.



IRON SEAMS IN ONE DIRECTION



CUT
2.5"

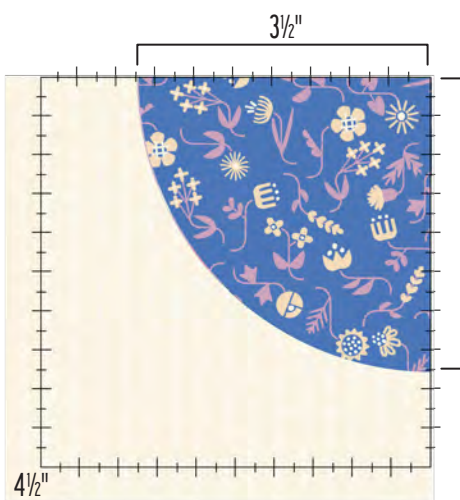


MAKE SURE YOUR
SEAMS FOR EACH ROW
ALTERNATE DIRECTIONS

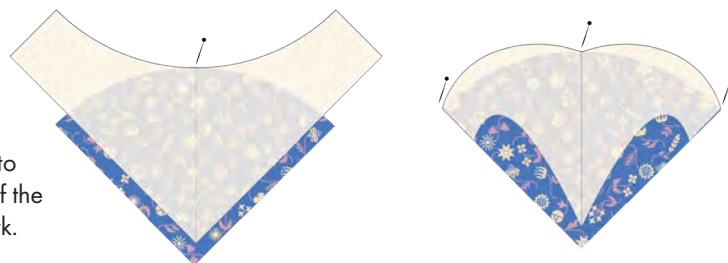
postage stamp borders

4. Using your Template A and B pieces, align the center and pin, then align straight edges on either side and pin. You may find it helpful to iron both pieces in half, to more easily find your center line.

5. Slowly sew the curved edges together without stretching the fabric. Press seam toward Template A piece.



6. Square up blocks to 4 1/2", with the edge of the curve at the 3 1/2" mark.



7. Assemble blocks for postage stamp border, make 48 arches (sets of two blocks) iron seam open, use the other 16 for your corners.



8. For Sashing:

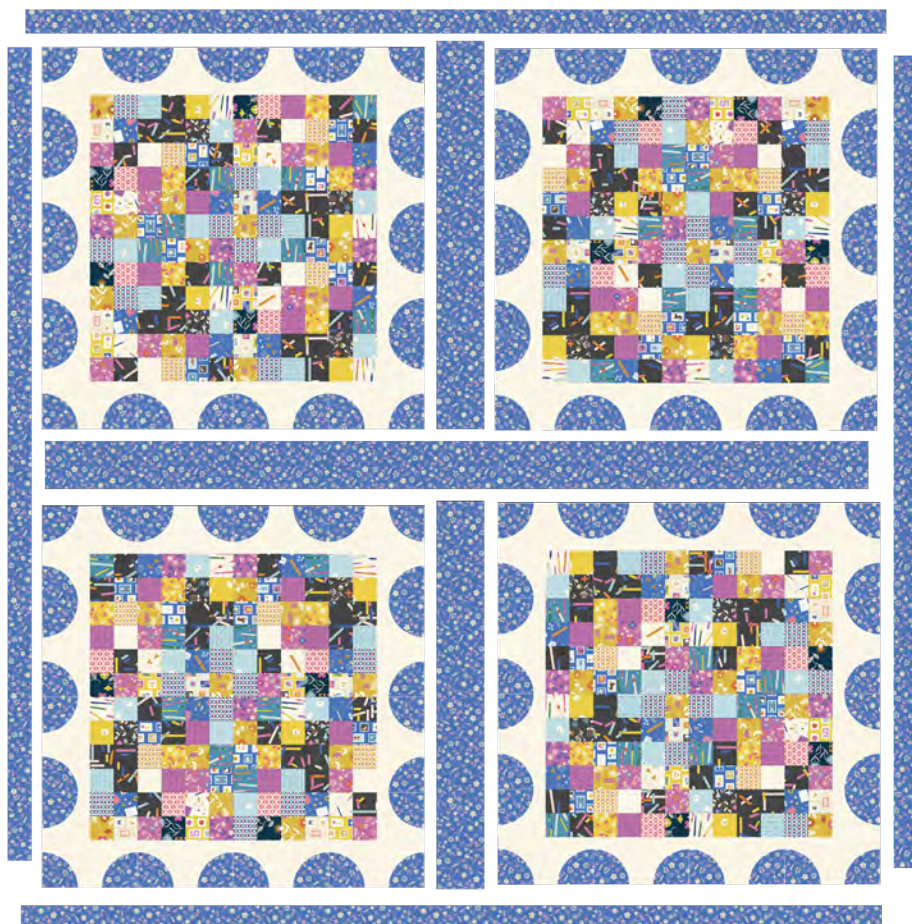
Sashing between stamps: (2) 4 1/2" x 32 1/2" (vertical)

Long sashing between stamps: (1) 4 1/2" x 68 1/2" (horizontal)

9. For Borders:

For top and bottom edge: (2) 2 1/2" x 72" (horizontal)

For left and right edges: (2) 2 1/2" x 68 1/2" (vertical)



**YOU DID IT! YOU MADE A
POSTAGE PATCHWORK QUILT!!**

Be sure to use #rubystarsociety and
#postagepatchworkquilt when sharing your
creations so we can see them!

★ **RUBY STAR
SOCIETY** ★

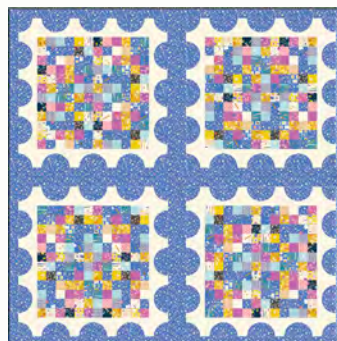
moda
FABRICS + SUPPLIES

 @rubystarsociety

POSTAGE PATCHWORK QUILT

The Postage Patchwork quilt is a modern twist on the traditional postage stamp quilt. Using one jelly roll and two coordinating fabrics, this quilt shows off an entire collection (or your scrap basket!) really nicely.

This project is a great opportunity to practice strip piecing and nested seams, as well as sewing curves.



72" X 72"

FABRIC REQUIREMENTS



RS1089 JR
1 jelly roll

BINDING: ½ yds

BACKING: 5 yds

BATTING: at least 90" x 90"



RS1095 15
2½ YDS
sashing, curved blocks,
and background



RS1096 11
2¼ YDS
curved blocks

★ RUBY STAR
SOCIETY ★

moda
FABRICS + SUPPLIES

Copyright 2023 Alexia Abegg. Copying or otherwise redistributing is strictly prohibited. For personal use only.

1"

A

*postage
patchwork*

B

postage patchwork